

For Research Use Only

# LAT Recombinant antibody, PBS Only

Catalog Number: 82901-1-PBS

Featured Product



## Basic Information

Catalog Number:

82901-1-PBS

Size:

100ug, Concentration: 1mg/ml by Nanodrop;

Source:

Rabbit

Isotype:

IgG

GenBank Accession Number:

BC011563

GeneID (NCBI):

27040

UNIPROT ID:

O43561

Full Name:

linker for activation of T cells

Calculated MW:

262 aa, 28 kDa

Observed MW:

36-38 kDa

Purification Method:

Protein A purification

CloneNo.:

2P13

## Applications

Tested Applications:

WB, IF/ICC, FC (Intra), Indirect ELISA

Species Specificity:

human, mouse

## Background Information

LAT is a membrane-localized adaptor protein which is primarily concentrated in microdomains by palmitoylation. LAT plays a central role in T-cell activation by nucleating signaling complexes that are critical for the propagation of T-cell signals from the plasma membrane to the cellular interior. In addition to being a positive regulator of T cell signaling, LAT also recruits several negative regulatory proteins, including kinases, phosphatases, and ubiquitin ligases, which ultimately leads to signal termination. LAT is subject to ubiquitylation, and ubiquitin-resistant mutants of LAT display enhanced signaling.

## Storage

Storage:

Store at -80°C.

Storage Buffer:

PBS Only

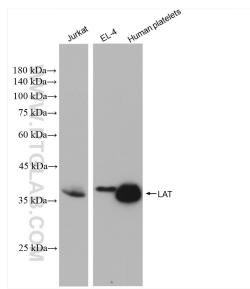
For technical support and original validation data for this product please contact:

T: 1 (888) 4PTGLAB (1-888-478-4522) (toll free in USA), or 1(312) 455-8498 (outside USA)

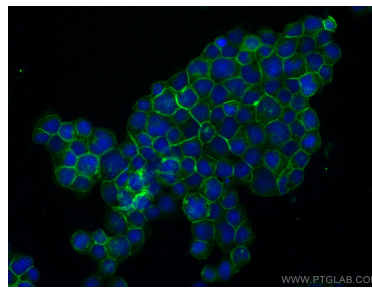
E: [proteintech@ptglab.com](mailto:proteintech@ptglab.com)  
W: [ptglab.com](http://ptglab.com)

This product is exclusively available under Proteintech Group brand and is not available to purchase from any other manufacturer.

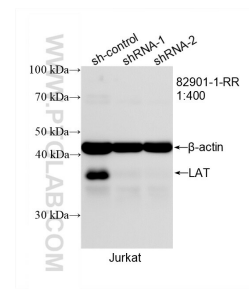
## Selected Validation Data



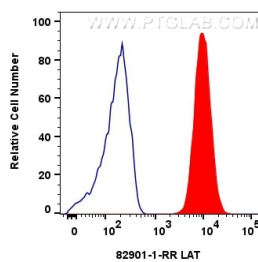
Various lysates were subjected to SDS PAGE followed by western blot with 82901-1-RR (LAT antibody) at dilution of 1:2500 incubated at room temperature for 1.5 hours. This data was developed using the same antibody clone with 82901-1-PBS in a different storage buffer formulation.



Immunofluorescent analysis of (4% PFA) fixed Jurkat cells using LAT antibody (82901-1-RR, Clone: 2P13) at dilution of 1:1500 and CoraLite®488-Conjugated AffiniPure Goat Anti-Rabbit IgG(H+L) (SA00013-2). This data was developed using the same antibody clone with 82901-1-PBS in a different storage buffer formulation.



WB result of LAT antibody (82901-1-RR; 1:400; incubated at room temperature for 1.5 hours) with sh-Control and sh-LAT transfected Jurkat cells. This data was developed using the same antibody clone with 82901-1-PBS in a different storage buffer formulation.



1x10<sup>6</sup> Jurkat cells were intracellularly stained with 0.25 ug LAT Recombinant antibody (82901-1-RR, Clone:2P13) and CoraLite®488-Conjugated AffiniPure Goat Anti-Rabbit IgG(H+L) (SA00013-2) (red), or 0.25 ug Isotype Control (blue). Cells were fixed with 4% PFA and permeabilized with Flow Cytometry Perm Buffer (PF00011-C). This data was developed using the same antibody clone with 82901-1-PBS in a different storage buffer formulation.