

For Research Use Only

# KIF15 Recombinant antibody, PBS Only

Catalog Number: 82903-1-PBS

Featured Product



## Basic Information

Catalog Number:

82903-1-PBS

Size:

100ug, Concentration: 1mg/ml by Nanodrop;

Source:

Rabbit

Isotype:

IgG

Immunogen Catalog Number:

AG33897

GenBank Accession Number:

NM\_020242

GeneID (NCBI):

56992

UNIPROT ID:

Q9NS87

Full Name:

kinesin family member 15

Calculated MW:

160 kDa

Observed MW:

160 kDa

Purification Method:

Protein A purification

CloneNo.:

230049F1

## Applications

Tested Applications:

WB, IHC, Indirect ELISA

Species Specificity:

human

## Background Information

KIF15, also named as KLP2 and KNSL7, belongs to the kinesin-like protein family and KLP2 subfamily. It is a plus-end directed kinesin-like motor enzyme which involved in mitotic spindle assembly. Several isoforms of KIF15 exist due to the alternative splicing, with molecular weight between 130-160 kDa. Sometimes higher molecular weight around 200 kDa can also be observed, which may be a modified variant of KIF15. (14618103)

## Storage

Storage:

Store at -80°C.

Storage Buffer:

PBS only, pH7.3

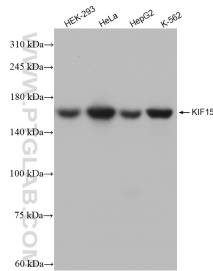
For technical support and original validation data for this product please contact:

T: 1 (888) 4PTGLAB (1-888-478-4522) (toll free in USA), or 1(312) 455-8498 (outside USA)

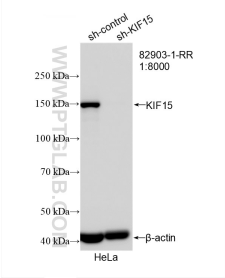
E: [proteintech@ptglab.com](mailto:proteintech@ptglab.com)  
W: [ptglab.com](http://ptglab.com)

This product is exclusively available under Proteintech Group brand and is not available to purchase from any other manufacturer.

## Selected Validation Data

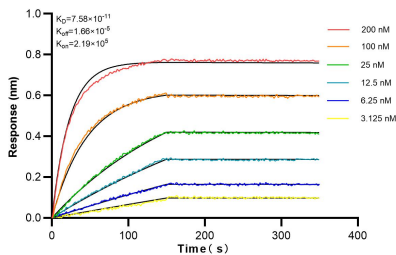


Various lysates were subjected to SDS PAGE followed by western blot with 82903-1-RR (KIF15 antibody) at dilution of 1:5000 incubated at room temperature for 1.5 hours. This data was developed using the same antibody clone with 82903-1-PBS in a different storage buffer formulation.



WB result of KIF15 antibody (82903-1-RR; 1:8000; incubated at room temperature for 1.5 hours) with sh-Control and sh-KIF15 transfected HeLa cells. This data was developed using the same antibody clone with 82903-1-PBS in a different storage buffer formulation.

Immunohistochemical analysis of paraffin-embedded human intrahepatic cholangiocarcinoma tissue slide using 82903-1-RR (KIF15 antibody) at dilution of 1:200 (under 20x lens). Heat mediated antigen retrieval with Tris-EDTA buffer (pH 9.0). This data was developed using the same antibody clone with 82903-1-PBS in a different storage buffer formulation.



Biolayer interferometry (BLI) kinetic assays of 82903-1-RR against Human KIF15 were performed. The affinity constant is 75.8 pM.