

For Research Use Only

KIF15 Recombinant antibody

Catalog Number: 82903-1-RR



Basic Information

Catalog Number: 82903-1-RR	GenBank Accession Number: NM_020242	Purification Method: Protein A purification
Size: 100ul , Concentration: 1000 µg/ml by Nanodrop;	GeneID (NCBI): 56992	CloneNo.: 230049F1
Source: Rabbit	Full Name: kinesin family member 15	Recommended Dilutions: WB 1:2000-1:10000
Isotype: IgG	Calculated MW: 160 kDa	
Immunogen Catalog Number: AG33897	Observed MW: 160 kDa	

Applications

Tested Applications: WB, ELISA	Positive Controls: WB : HEK-293 cells, HeLa cells, HepG2 cells, K-562 cells
Species Specificity: Human	

Background Information

KIF15, also named as KLP2 and KNSL7, belongs to the kinesin-like protein family and KLP2 subfamily. It is a plus-end directed kinesin-like motor enzyme which involved in mitotic spindle assembly. Several isoforms of KIF15 exist due to the alternative splicing, with molecular weight between 130-160 kDa. Sometimes higher molecular weight around 200 kDa can also be observed, which may be a modified variant of KIF15. (14618103)

Storage

Storage:
Store at -20°C. Stable for one year after shipment.
Storage Buffer:
PBS with 0.02% sodium azide and 50% glycerol pH 7.3.
Aliquoting is unnecessary for -20°C storage

*** 20ul sizes contain 0.1% BSA

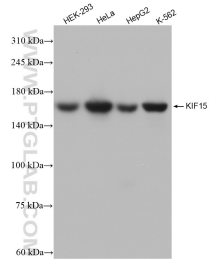
For technical support and original validation data for this product please contact:

T: 1 (888) 4PTGLAB (1-888-478-4522) (toll free
in USA), or 1(312) 455-8498 (outside USA)

E: proteintech@ptglab.com
W: ptglab.com

This product is exclusively available under Proteintech Group brand and is not available to purchase from any other manufacturer.

Selected Validation Data



Various lysates were subjected to SDS PAGE followed by western blot with 82903-1-RR (KIF15 antibody) at dilution of 1:5000 incubated at room temperature for 1.5 hours.