

For Research Use Only

SEC24A Recombinant antibody

Catalog Number: 82908-1-RR



Basic Information

Catalog Number:

82908-1-RR

Size:

100ul, Concentration: 1000 ug/ml by Nanodrop;

Source:

Rabbit

Isotype:

IgG

Immunogen Catalog Number:

AG8723

GenBank Accession Number:

BC019341

GeneID (NCBI):

10802

UNIPROT ID:

O95486

Full Name:

SEC24 family, member A (S. cerevisiae)

Calculated MW:

613 aa, 66 kDa

Observed MW:

120 kDa

Purification Method:

Protein A purification

CloneNo.:

230105B3

Recommended Dilutions:

WB 1:1000-1:5000

IF/ICC 1:125-1:500

Applications

Tested Applications:

WB, IF/ICC, FC (Intra), ELISA

Species Specificity:

human

Positive Controls:

WB : U-87 MG cells, HEK-293 cells, HeLa cells, HepG2 cells

IF/ICC : HeLa cells,

Background Information

COPII-coated vesicles mediate anterograde transport from the ER to the Golgi apparatus. COPII is composed of three parts: two coat protein complexes (Sec23/24 complex and Sec13/31 complex) and one small GTP-binding protein, Sar1 (PMID: 9568718). Sec24 subunit of the coat complex has been implicated in cargo recognition (PMID: 17316621). In mammal cells, there are four Sec24 isoforms, termed Sec24A, Sec24B, Sec24C, and Sec24D (PMID: 10329445). This antibody is specific to SEC24A.

Storage

Storage:

Store at -20°C. Stable for one year after shipment.

Storage Buffer:

PBS with 0.02% sodium azide and 50% glycerol pH 7.3.

Aliquoting is unnecessary for -20°C storage

*** 20ul sizes contain 0.1% BSA

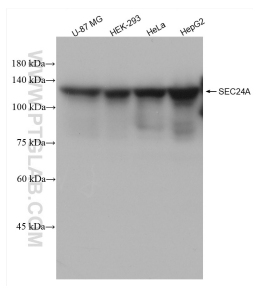
For technical support and original validation data for this product please contact:

T: 1 (888) 4PTGLAB (1-888-478-4522) (toll free in USA), or 1(312) 455-8498 (outside USA)

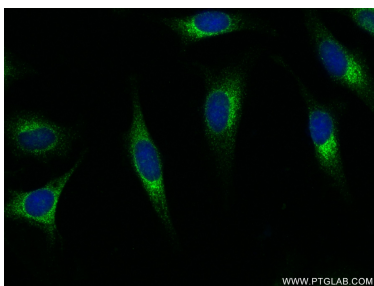
E: proteintech@ptglab.com
W: ptglab.com

This product is exclusively available under Proteintech Group brand and is not available to purchase from any other manufacturer.

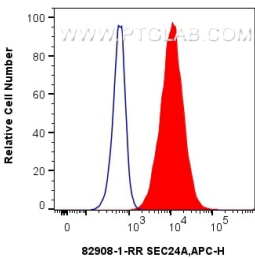
Selected Validation Data



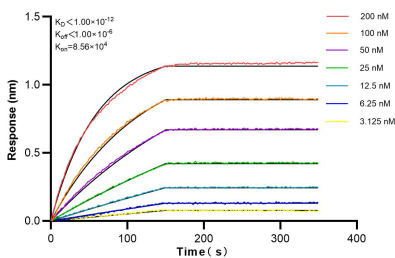
Various lysates were subjected to SDS PAGE followed by western blot with 82908-1-RR (SEC24A antibody) at dilution of 1:2500 incubated at room temperature for 1.5 hours.



Immunofluorescent analysis of (-20°C Ethanol) fixed HeLa cells using SEC24A antibody (82908-1-RR, Clone: 230105B3) at dilution of 1:250 and CoraLite®488-Conjugated Goat Anti-Rabbit IgG(H+L) (SA00013-2).



1x10⁶ HepG2 cells were intracellularly stained with 0.25 ug Anti-Human SEC24A (82908-1-RR, Clone:230105B3) and APC-Conjugated Goat Anti-Rabbit IgG(H+L) at dilution 1:166 (red), or 0.25 ug Rabbit IgG control Rabbit PolyAb (30000-0-AP, Clone:) (blue). Cells were fixed with 4% PFA and permeabilized with Flow Cytometry Perm Buffer (PF00011-C).



Bioluminescence resonance energy transfer (BRET) kinetic assays of 82908-1-RR against Human SEC24A were performed. The affinity constant is below 1 pM.