

For Research Use Only

# TBCD Recombinant antibody, PBS Only



Catalog Number: 82911-7-PBS

## Basic Information

Catalog Number:

82911-7-PBS

Size:

100ug, Concentration: 1mg/ml by Nanodrop;

Source:

Rabbit

Isotype:

IgG

Immunogen Catalog Number:

AG6310

GenBank Accession Number:

BC003094

GeneID (NCBI):

6904

UNIPROT ID:

Q9BTW9

Full Name:

tubulin folding cofactor D

Calculated MW:

133 kDa

Observed MW:

130 kDa

Purification Method:

Protein A purification

CloneNo.:

230209F3

## Applications

Tested Applications:

WB, IF/ICC, Indirect ELISA

Species Specificity:

human

## Storage

Storage:

Store at -80°C.

Storage Buffer:

PBS Only

For technical support and original validation data for this product please contact:

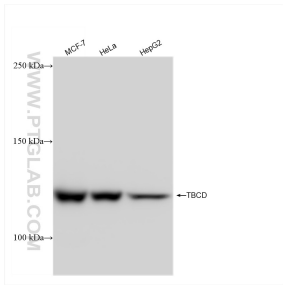
T: 1 (888) 4PTGLAB (1-888-478-4522) (toll free in USA), or 1(312) 455-8498 (outside USA)

E: [proteintech@ptglab.com](mailto:proteintech@ptglab.com)

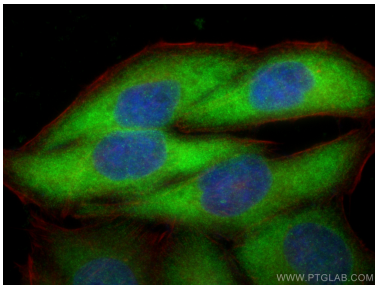
W: [ptglab.com](http://ptglab.com)

This product is exclusively available under Proteintech Group brand and is not available to purchase from any other manufacturer.

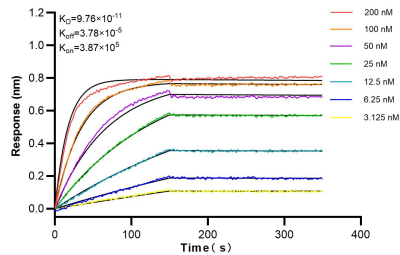
# Selected Validation Data



Various lysates were subjected to SDS PAGE followed by western blot with 82911-7-RR (TBCE antibody) at dilution of 1:10000 incubated at room temperature for 1.5 hours. This data was developed using the same antibody clone with 82911-7-PBS in a different storage buffer formulation.



Immunofluorescent analysis of (-20°C Ethanol) fixed HepG2 cells using TBCE antibody (82911-7-RR, Clone: 230209F3 ) at dilution of 1:1000 and CoraLite®488-Conjugated AffiniPure Goat Anti-Rabbit IgG(H+L) (SA00013-2), CL594-Phalloidin (red). This data was developed using the same antibody clone with 82911-7-PBS in a different storage buffer formulation.



Biolayer interferometry (BLI) kinetic assays of 82911-7-RR against Human TBCE were performed. The affinity constant is 97.6 pM.