

For Research Use Only

CTNNBIP1 Recombinant antibody, PBS Only (Detector)

Catalog Number: 82914-2-PBS



Basic Information

Catalog Number: 82914-2-PBS	GenBank Accession Number: BC014300	Purification Method: Protein A purification
Size: 100ug , Concentration: 1mg/ml by Nanodrop;	GeneID (NCBI): 56998	CloneNo.: 230164B3
Source: Rabbit	UNIPROT ID: Q9NSA3	
Isotype: IgG	Full Name: catenin, beta interacting protein 1	
Immunogen Catalog Number: AG13160	Calculated MW: 21 kDa	

Applications

Tested Applications:
Cytometric bead array, Sandwich ELISA, Indirect ELISA, Sample test

Species Specificity:
human

Product Information

82914-2-PBS targets CTNNBIP1 as part of a matched antibody pair:

MP00102-1: 82914-4-PBS capture and 82914-2-PBS detection (validated in Cytometric bead array, Sandwich ELISA)

MP00102-3: 82914-3-PBS capture and 82914-2-PBS detection (validated in Cytometric bead array)

Unconjugated rabbit recombinant monoclonal antibody in PBS only (BSA and azide free) storage buffer at a concentration of 1 mg/mL, ready for conjugation. Created using Proteintech's proprietary in-house recombinant technology. Recombinant production enables unrivalled batch-to-batch consistency, easy scale-up, and future security of supply.

This conjugation ready format makes antibodies ideal for use in many applications including: ELISAs, multiplex assays requiring matched pairs, mass cytometry, and multiplex imaging applications. Antibody use should be optimized by the end user for each application and assay.

Storage

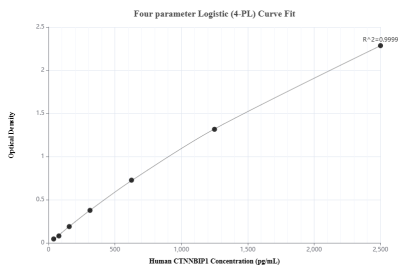
Storage:
Store at -80°C.

Storage Buffer:
100% PBS pH 7.3

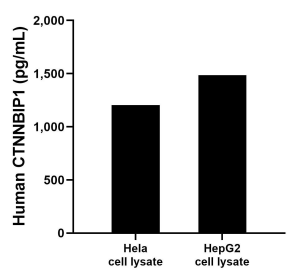
For technical support and original validation data for this product please contact:
T: 1 (888) 4PTGLAB (1-888-478-4522) (toll free in USA), or 1(312) 455-8498 (outside USA)
E: proteintech@ptglab.com
W: ptglab.com

This product is exclusively available under Proteintech Group brand and is not available to purchase from any other manufacturer.

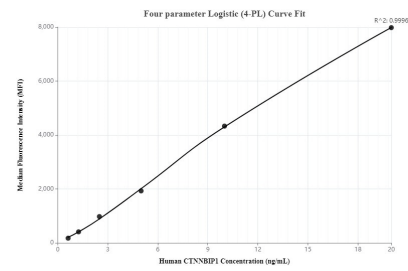
Selected Validation Data



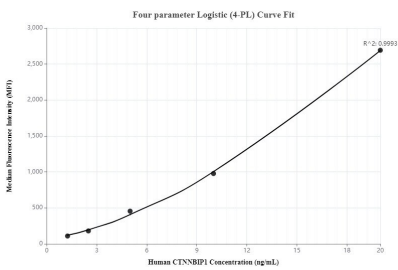
Sandwich ELISA standard curve of MP00102-1, Human CTNNBIP1 Recombinant Matched Antibody Pair - PBS only. 82914-4-PBS was coated to a plate as the capture antibody and incubated with serial dilutions of standard Ag13160. 82914-2-PBS was HRP conjugated as the detection antibody. Range: 39.1-2500 pg/mL



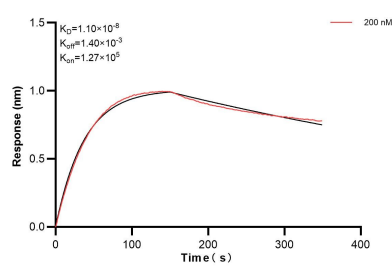
HeLa and HepG2 cell lysates were measured. The human CTNNBIP1 concentration of detected samples was determined to be 1,205.0 pg/mL (based on a 1.50 mg/mL extract load) in HeLa cell lysate and 1486.5 pg/mL (based on a 1.20 mg/mL extract load) in HepG2 cell lysate.



Cytometric bead array standard curve of MP00102-1, CTNNBIP1 Recombinant Matched Antibody Pair, PBS Only. Capture antibody: 82914-4-PBS. Detection antibody: 82914-2-PBS. Standard: Ag13160. Range: 0.313-20 ng/mL



Cytometric bead array standard curve of MP00102-3, CTNNBIP1 Recombinant Matched Antibody Pair, PBS Only. Capture antibody: 82914-3-PBS. Detection antibody: 82914-2-PBS. Standard: Ag13160. Range: 1.25-20 ng/mL



Biolayer interferometry (BLI) kinetic assay of 82914-2-PBS against Human CTNNBIP1 was performed. The affinity constant is 11.0 nM.