

For Research Use Only

Alpha-1-Antitrypsin Recombinant antibody



Catalog Number: 82918-1-RR

Basic Information

Catalog Number: 82918-1-RR	GenBank Accession Number: BC015642	Purification Method: Protein A purification
Size: 100ul , Concentration: 800 µg/ml by Nanodrop;	GeneID (NCBI): 5265	CloneNo.: 230109A8
Source: Rabbit	Full Name: serpin peptidase inhibitor, clade A (alpha-1 antiproteinase, antitrypsin), member 1	Recommended Dilutions: WB 1:5000-1:50000
Isotype: IgG	Calculated MW: 418 aa, 47 kDa	
Immunogen Catalog Number: AG9369	Observed MW: 47 kDa	

Applications

Tested Applications:
WB, ELISA

Species Specificity:
Human

Positive Controls:

WB : human liver tissue, human heart tissue, human saliva, human placenta tissue, human urine

Background Information

SERPINA1 is the gene for a protein called alpha-1-antitrypsin (AAT), which is a serine protease inhibitor whose targets include elastase, plasmin, thrombin, trypsin, chymotrypsin, and plasminogen activator. AAT is a glycoprotein synthesized primarily by hepatocytes, with smaller amounts synthesized by intestinal epithelial cells, neutrophils, pulmonary alveolar cells and macrophages. AAT is the most abundant, endogenous serine protease inhibitor in blood circulation and it has been implicated in regulating vital fluid phase biological events such as blood coagulation, fibrinolysis, complement activation, apoptosis, reproduction, tumor progression and inflammatory response. The primary function of AAT is thought to be the inactivation of neutrophil elastase and other endogenous serine proteases. Defects in SERPINA1 can cause emphysema or liver disease.

Storage

Storage:
Store at -20°C. Stable for one year after shipment.

Storage Buffer:
PBS with 0.02% sodium azide and 50% glycerol pH 7.3.

Aliquoting is unnecessary for -20°C storage

*** 20ul sizes contain 0.1% BSA

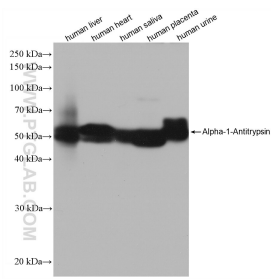
For technical support and original validation data for this product please contact:

T: 1 (888) 4PTGLAB (1-888-478-4522) (toll free in USA), or 1(312) 455-8498 (outside USA)

E: proteintech@ptglab.com
W: ptglab.com

This product is exclusively available under Proteintech Group brand and is not available to purchase from any other manufacturer.

Selected Validation Data



Various lysates were subjected to SDS PAGE followed by western blot with 82918-1-RR (Alpha-1-Antitrypsin antibody) at dilution of 1:32000 incubated at room temperature for 1.5 hours.