

For Research Use Only

GSDMA Recombinant antibody

Catalog Number: 82920-2-RR



Basic Information

Catalog Number: 82920-2-RR	GenBank Accession Number: BC109197	Purification Method: Protein A purification
Size: 100ul , Concentration: 1000 ug/ml by Nanodrop;	GeneID (NCBI): 284110	CloneNo.: 230161C5
Source: Rabbit	UNIPROT ID: Q96QA5	Recommended Dilutions: WB 1:5000-1:50000 IF/ICC 1:50-1:500
Isotype: IgG	Full Name: gasdermin A	
Immunogen Catalog Number: AG24407	Calculated MW: 445 aa, 49 kDa	
	Observed MW: 49 kDa	

Applications

Tested Applications: WB, IF/ICC, ELISA	Positive Controls:
Species Specificity: human	WB : Daudi cells, IF/ICC : HeLa cells,

Background Information

Gasdermins, a family of five pore-forming proteins (GSDMA-GSDME) in humans expressed predominantly in the skin, mucosa and immune sentinel cells, are key executioners of inflammatory cell death (pyroptosis), which recruits immune cells to infection sites and promotes protective immunity. GSDMA was predicted to enable phosphatidylinositol-4,5-bisphosphate binding activity, phosphatidylinositol-4-phosphate binding activity, and phosphatidylserine binding activity. Involved in apoptotic process.

Storage

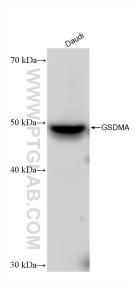
Storage:
Store at -20°C. Stable for one year after shipment.
Storage Buffer:
PBS with 0.02% sodium azide and 50% glycerol pH 7.3.
Aliquoting is unnecessary for -20°C storage

*** 20ul sizes contain 0.1% BSA

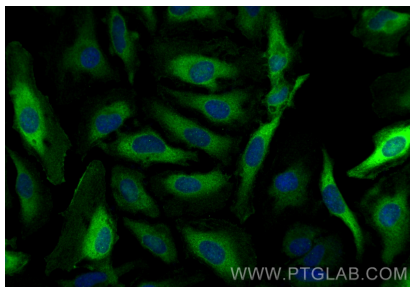
For technical support and original validation data for this product please contact:
T: 1 (888) 4PTGLAB (1-888-478-4522) (toll free in USA), or 1(312) 455-8498 (outside USA)
E: proteintech@ptglab.com
W: ptglab.com

This product is exclusively available under Proteintech Group brand and is not available to purchase from any other manufacturer.

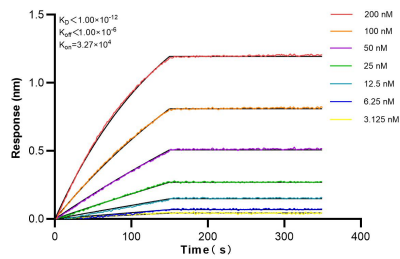
Selected Validation Data



Daudi cells were subjected to SDS PAGE followed by western blot with 82920-2-RR (GSDMA antibody) at dilution of 1:10000 incubated at room temperature for 1.5 hours.



Immunofluorescent analysis of (-20°C Ethanol) fixed HeLa cells using GSDMA antibody (82920-2-RR, Clone: 230161C5) at dilution of 1:200 and Multi-rAb CoraLite ® Plus 488-Goat Anti-Rabbit Recombinant Secondary Antibody (H+L) (RGAR002).



Biolayer interferometry (BLI) kinetic assays of 82920-2-RR against Human GSDMA were performed. The affinity constant is below 1 pM.