

For Research Use Only

HLA-DMB Recombinant antibody

Catalog Number: 82922-1-RR

Featured Product



Basic Information

Catalog Number: 82922-1-RR	GenBank Accession Number: BC027175	Purification Method: Protein A purification
Size: 100ul , Concentration: 1000 ug/ml by Nanodrop;	GeneID (NCBI): 3109	CloneNo.: 230123A3
Source: Rabbit	UNIPROT ID: P28068	Recommended Dilutions: WB 1:2000-1:10000 IHC 1:300-1:1200 IF/ICC 1:200-1:800
Isotype: IgG	Full Name: major histocompatibility complex, class II, DM beta	
Immunogen Catalog Number: AG16320	Calculated MW: 263 aa, 29 kDa	
	Observed MW: 31 kDa	

Applications

Tested Applications: WB, IHC, IF/ICC, ELISA	Positive Controls:
Species Specificity: human	WB : Raji cells, Daudi cells, Ramos cells
Note-IHC: suggested antigen retrieval with TE buffer pH 9.0; (*) Alternatively, antigen retrieval may be performed with citrate buffer pH 6.0	IHC : human ovary cancer tissue,
	IF/ICC : Raji cells,

Background Information

Human major histocompatibility complex (MHC) antigens, also referred to as human leukocyte antigens (HLA), are encoded by genes located on the short arm of chromosome 6 (6p21.3). There are two classes of HLA antigens: class I (HLA-A, B and C) and class II (HLA-D). The class II molecules are composed of two non-covalently associated alpha and beta chains. HLA-DMA and HLA-DMB form a functional heterodimer that is critical in the pathway of class II antigen presentation. HLA-DM plays a critical role in catalyzing the release of Class II HLA-associated invariant chain-derived peptides (CLIP) from newly synthesized class II HLA molecules and freeing the peptide binding site for acquisition of antigenic peptides.

Storage

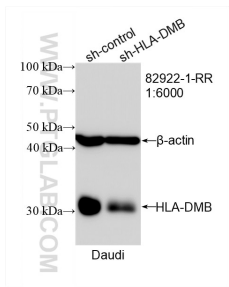
Storage:
Store at -20°C. Stable for one year after shipment.
Storage Buffer:
PBS with 0.02% sodium azide and 50% glycerol pH 7.3.
Aliquoting is unnecessary for -20°C storage

*** 20ul sizes contain 0.1% BSA

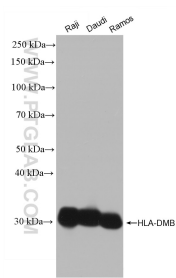
For technical support and original validation data for this product please contact:
T: 1 (888) 4PTGLAB (1-888-478-4522) (toll free in USA), or 1(312) 455-8498 (outside USA)
E: proteintech@ptglab.com
W: ptglab.com

This product is exclusively available under Proteintech Group brand and is not available to purchase from any other manufacturer.

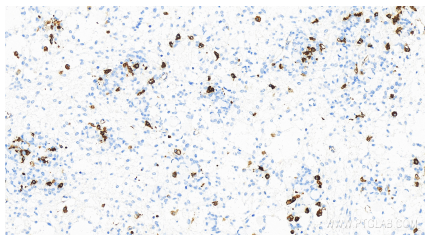
Selected Validation Data



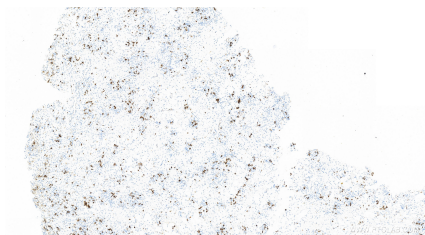
WB result of HLA-DMB antibody (82922-1-RR; 1:6000; incubated at room temperature for 1.5 hours) with sh-Control and sh-HLA-DMB transfected Daudi cells.



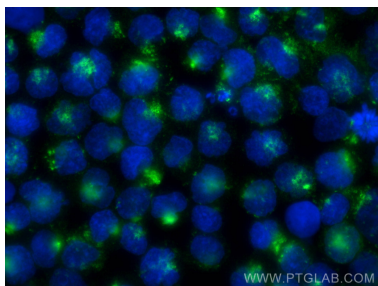
Various lysates were subjected to SDS PAGE followed by western blot with 82922-1-RR (HLA-DMB antibody) at dilution of 1:5000 incubated at room temperature for 1.5 hours.



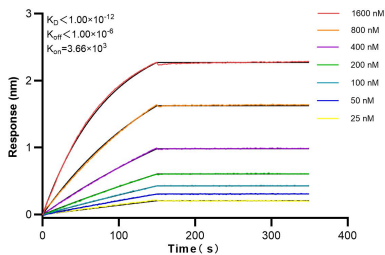
Immunohistochemical analysis of paraffin-embedded human ovary cancer tissue slide using 82922-1-RR (HLA-DMB antibody) at dilution of 1:600 (under 40x lens). Heat mediated antigen retrieval with Tris-EDTA buffer (pH 9.0).



Immunohistochemical analysis of paraffin-embedded human ovary cancer tissue slide using 82922-1-RR (HLA-DMB antibody) at dilution of 1:600 (under 10x lens). Heat mediated antigen retrieval with Tris-EDTA buffer (pH 9.0).



Immunofluorescent analysis of (4% PFA) fixed Raji cells using HLA-DMB antibody (82922-1-RR, Clone: 230123A3) at dilution of 1:400 and CoraLite® 488-Conjugated AffiniPure Goat Anti-Rabbit IgG(H+L).



Bilayer interferometry (BLI) kinetic assays of 82922-1-RR against Human HLA-DMB were performed. The affinity constant is below 1 pM.