

For Research Use Only

S100A16 Recombinant antibody, PBS Only

Catalog Number: 82923-1-PBS



Basic Information

Catalog Number: 82923-1-PBS	GenBank Accession Number: BC019099	Purification Method: Protein A purification
Size: 100ug , Concentration: 1mg/ml by Nanodrop;	GeneID (NCBI): 140576	CloneNo.: 3E1
Source: Rabbit	UNIPROT ID: Q96FQ6	
Isotype: IgG	Full Name: S100 calcium binding protein A16	
Immunogen Catalog Number: AG2023	Calculated MW: 103 aa, 12 kDa	
	Observed MW: 12 kDa	

Applications

Tested Applications:
WB, FC (Intra), Indirect ELISA

Species Specificity:
human

Background Information

S100A16 is a member of the S100 protein family. S100A16 is expressed in a variety of human tissues. S100A16 expression is especially high in tissues rich in epithelial cells. Functionally, S100A16 has been linked to several aspects of tumorigenesis, for example, cell proliferation, differentiation, migration, invasion, and epithelial-mesenchymal transition (EMT). Accordingly, S100A16 has been suggested to have both tumour-promoting and suppressive roles in human cancers. S100A16-mediated cellular functions are suggested to be mediated by the regulation of various signaling pathways/proteins including EMT-related proteins E-cadherin and Vimentin, PI3K-AKT, p53, MMP1-1, MMP-2, MMP-9, JNK/p38, etc. (PMID: 37509106).

Storage

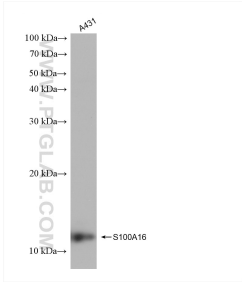
Storage:
Store at -80°C.

Storage Buffer:
PBS Only

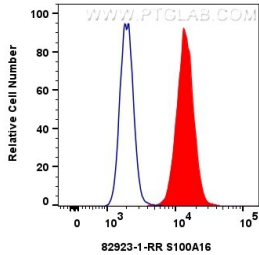
For technical support and original validation data for this product please contact:
T: 1 (888) 4PTGLAB (1-888-478-4522) (toll free in USA), or 1(312) 455-8498 (outside USA)
E: proteintech@ptglab.com
W: ptglab.com

This product is exclusively available under Proteintech Group brand and is not available to purchase from any other manufacturer.

Selected Validation Data



A431 cells were subjected to SDS PAGE followed by western blot with 82923-1-RR (S100A16 antibody) at dilution of 1:5000 incubated at room temperature for 1.5 hours. This data was developed using the same antibody clone with 82923-1-PBS in a different storage buffer formulation.



1x10^6 A431 cells were intracellularly stained with 0.25 ug S100A16 Recombinant antibody (82923-1-RR, Clone:3E1) and CoraLite®488-Conjugated Goat Anti-Rabbit IgG(H+L) (SA00013-2)(red), or 0.25 ug Rabbit IgG Isotype Control Recombinant Antibody (98136-1-RR, Clone: 240953C9) (blue). Cells were fixed with 4% PFA and permeabilized with Flow Cytometry Perm Buffer (PF00011-C). This data was developed using the same antibody clone with 82923-1-PBS in a

