

For Research Use Only

# S100A16 Recombinant antibody

Catalog Number: 82923-1-RR



## Basic Information

<b>Catalog Number:</b> 82923-1-RR	<b>GenBank Accession Number:</b> BC019099	<b>Purification Method:</b> Protein A purification
<b>Size:</b> 100ul , Concentration: 1000 ug/ml by Nanodrop;	<b>GeneID (NCBI):</b> 140576	<b>CloneNo.:</b> 3E1
<b>Source:</b> Rabbit	<b>UNIPROT ID:</b> Q96FQ6	<b>Recommended Dilutions:</b> WB 1:2000-1:10000
<b>Isotype:</b> IgG	<b>Full Name:</b> S100 calcium binding protein A16	
<b>Immunogen Catalog Number:</b> AG2023	<b>Calculated MW:</b> 103 aa, 12 kDa	
	<b>Observed MW:</b> 12 kDa	

## Applications

<b>Tested Applications:</b> WB, FC (Intra), ELISA	<b>Positive Controls:</b> WB : A431 cells,
<b>Species Specificity:</b> human	

## Background Information

S100A16 is a member of the S100 protein family. S100A16 is expressed in a variety of human tissues. S100A16 expression is especially high in tissues rich in epithelial cells. Functionally, S100A16 has been linked to several aspects of tumorigenesis, for example, cell proliferation, differentiation, migration, invasion, and epithelial-mesenchymal transition (EMT). Accordingly, S100A16 has been suggested to have both tumour-promoting and suppressive roles in human cancers. S100A16-mediated cellular functions are suggested to be mediated by the regulation of various signaling pathways/proteins including EMT-related proteins E-cadherin and Vimentin, PI3K-AKT, p53, MMP1-1, MMP-2, MMP-9, JNK/p38, etc. (PMID: 37509106).

## Storage

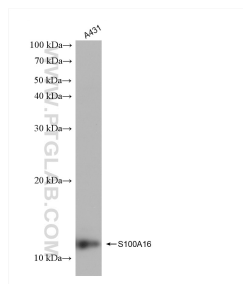
**Storage:**  
Store at -20°C. Stable for one year after shipment.  
**Storage Buffer:**  
PBS with 0.02% sodium azide and 50% glycerol pH 7.3.  
Aliquoting is unnecessary for -20°C storage

\*\*\* 20ul sizes contain 0.1% BSA

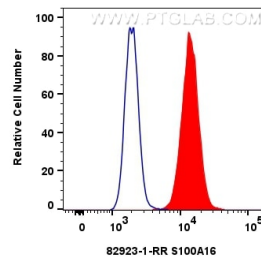
For technical support and original validation data for this product please contact:  
T: 1 (888) 4PTGLAB (1-888-478-4522) (toll free in USA), or 1(312) 455-8498 (outside USA)  
E: [proteintech@ptglab.com](mailto:proteintech@ptglab.com)  
W: [ptglab.com](http://ptglab.com)

This product is exclusively available under Proteintech Group brand and is not available to purchase from any other manufacturer.

## Selected Validation Data



A431 cells were subjected to SDS PAGE followed by western blot with 82923-1-RR (S100A16 antibody) at dilution of 1:5000 incubated at room temperature for 1.5 hours.



$1 \times 10^6$  A431 cells were intracellularly stained with 0.25  $\mu$ g S100A16 Recombinant antibody (82923-1-RR, Clone:3E1) and CoraLite®488-Conjugated Goat Anti-Rabbit IgG(H+L) (SA00013-2) (red), or 0.25  $\mu$ g Rabbit IgG Isotype Control Recombinant Antibody (98136-1-RR, Clone: 240953C9) (blue). Cells were fixed with 4% PFA and permeabilized with Flow Cytometry Perm Buffer (PF00011-C).