

For Research Use Only

# PAK7 Recombinant antibody, PBS Only (Capture/Detector)

Catalog Number: 82935-2-PBS



## Basic Information

<b>Catalog Number:</b> 82935-2-PBS	<b>GenBank Accession Number:</b> BC024179	<b>Purification Method:</b> Protein A purification
<b>Size:</b> 100ug , Concentration: 1mg/ml by Nanodrop;	<b>GeneID (NCBI):</b> 57144	<b>CloneNo.:</b> 230201A2
<b>Source:</b> Rabbit	<b>UNIPROT ID:</b> Q9P286	
<b>Isotype:</b> IgG	<b>Full Name:</b> p21 protein (Cdc42/Rac)-activated kinase 7	
<b>Immunogen Catalog Number:</b> AG29190	<b>Calculated MW:</b> 719 aa, 81 kDa	

## Applications

**Tested Applications:**  
Cytometric bead array, Indirect ELISA

**Species Specificity:**  
human

## Product Information

82935-2-PBS targets PAK7 as part of a matched antibody pair:

MP00086-1: 82935-2-PBS capture and 82935-4-PBS detection (validated in Cytometric bead array)

MP00086-2: 82935-2-PBS capture and 82935-5-PBS detection (validated in Cytometric bead array)

MP00086-3: 82935-3-PBS capture and 82935-2-PBS detection (validated in Cytometric bead array)

Unconjugated rabbit recombinant monoclonal antibody in PBS only (BSA and azide free) storage buffer at a concentration of 1 mg/mL, ready for conjugation. Created using Proteintech's proprietary in-house recombinant technology. Recombinant production enables unrivalled batch-to-batch consistency, easy scale-up, and future security of supply.

This conjugation ready format makes antibodies ideal for use in many applications including: ELISAs, multiplex assays requiring matched pairs, mass cytometry, and multiplex imaging applications. Antibody use should be optimized by the end user for each application and assay.

## Storage

**Storage:**  
Store at -80°C.

**Storage Buffer:**  
100% PBS pH 7.3

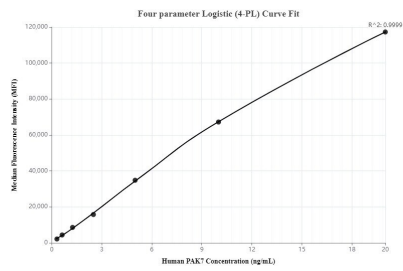
For technical support and original validation data for this product please contact:

T: 1 (888) 4PTGLAB (1-888-478-4522) (toll free in USA), or 1(312) 455-8498 (outside USA)

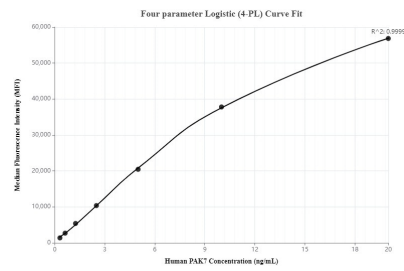
E: [proteintech@ptglab.com](mailto:proteintech@ptglab.com)  
W: [ptglab.com](http://ptglab.com)

This product is exclusively available under Proteintech Group brand and is not available to purchase from any other manufacturer.

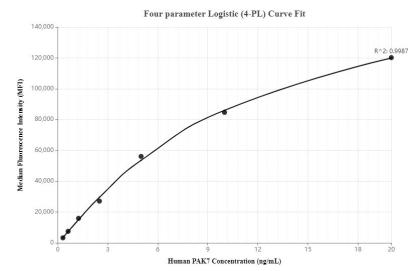
## Selected Validation Data



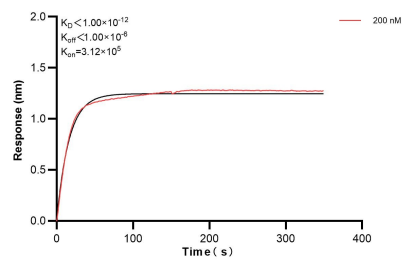
Cytometric bead array standard curve of MP00086-1, PAK7 Recombinant Matched Antibody Pair, PBS Only. Capture antibody: 82935-2-PBS. Detection antibody: 82935-4-PBS. Standard: Ag29190. Range: 0.313-20 ng/mL



Cytometric bead array standard curve of MP00086-2, PAK7 Recombinant Matched Antibody Pair, PBS Only. Capture antibody: 82935-2-PBS. Detection antibody: 82935-5-PBS. Standard: Ag29190. Range: 0.313-20 ng/mL



Cytometric bead array standard curve of MP00086-3, PAK7 Recombinant Matched Antibody Pair, PBS Only. Capture antibody: 82935-2-PBS. Detection antibody: 82935-3-PBS. Standard: Ag29190. Range: 0.313-20 ng/mL



Biolayer interferometry (BLI) kinetic assay of 82935-2-PBS against Human PAK7 was performed. The affinity constant is below 1 pM.