

For Research Use Only

EIF2S1 Recombinant antibody, PBS Only (Detector)

Catalog Number: 82936-5-PBS



Basic Information

Catalog Number: 82936-5-PBS	GenBank Accession Number: BC002513	Purification Method: Protein A purification
Size: 100ug , Concentration: 1mg/ml by Nanodrop;	GeneID (NCBI): 1965	CloneNo.: 230245E7
Source: Rabbit	UNIPROT ID: P05198	
Isotype: IgG	Full Name: eukaryotic translation initiation factor 2, subunit 1 alpha, 35kDa	
Immunogen Catalog Number: AG1645	Calculated MW: 36 kDa	

Applications

Tested Applications:
Cytometric bead array, Sandwich ELISA, Indirect ELISA, Sample test

Species Specificity:
human

Product Information

82936-5-PBS targets EIF2S1 as part of a matched antibody pair:

MP00076-2: 82936-4-PBS capture and 82936-5-PBS detection (validated in Cytometric bead array)

MP00076-4: 82936-6-PBS capture and 82936-5-PBS detection (validated in Sandwich ELISA)

Unconjugated rabbit recombinant monoclonal antibody in PBS only (BSA and azide free) storage buffer at a concentration of 1 mg/mL, ready for conjugation. Created using Proteintech's proprietary in-house recombinant technology. Recombinant production enables unrivalled batch-to-batch consistency, easy scale-up, and future security of supply.

This conjugation ready format makes antibodies ideal for use in many applications including: ELISAs, multiplex assays requiring matched pairs, mass cytometry, and multiplex imaging applications. Antibody use should be optimized by the end user for each application and assay.

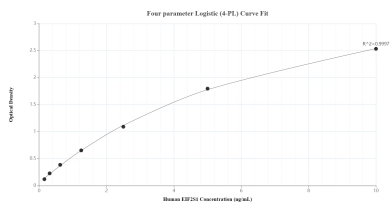
Storage

Storage:
Store at -80°C.
Storage Buffer:
100% PBS pH 7.3

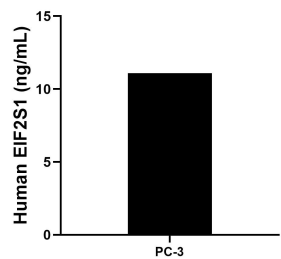
For technical support and original validation data for this product please contact:
T: 1 (888) 4PTGLAB (1-888-478-4522) (toll free in USA), or 1(312) 455-8498 (outside USA)
E: proteintech@ptglab.com
W: ptglab.com

This product is exclusively available under Proteintech Group brand and is not available to purchase from any other manufacturer.

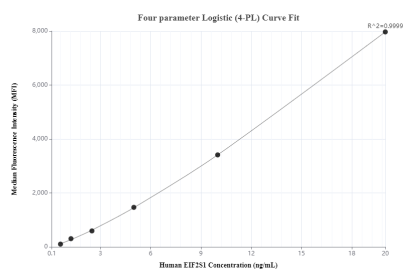
Selected Validation Data



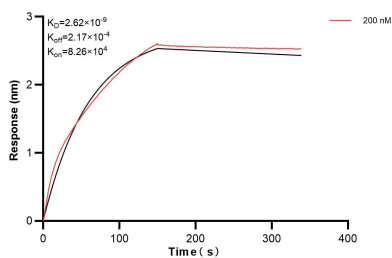
Sandwich ELISA standard curve of MP00076-4, Human EIF2S1 Recombinant Matched Antibody Pair - PBS only. 82936-6-PBS was coated to a plate as the capture antibody and incubated with serial dilutions of standard Ag1645. 82936-5-PBS was HRP conjugated as the detection antibody. Range: 0.156-10 ng/mL



The mean EIF2S1 concentration was determined to be 11.12 ng/mL in PC-3 cell extract based on a 1.20 mg/mL extract load.



Cytometric bead array standard curve of MP00076-2, EIF2S1 Recombinant Matched Antibody Pair, PBS Only. Capture antibody: 82936-4-PBS. Detection antibody: 82936-5-PBS. Standard: Ag1645. Range: 0.625-20 ng/mL



Biolayer interferometry (BLI) kinetic assay of 82936-5-PBS against Human EIF2S1 was performed. The affinity constant is 2.62 nM.