

For Research Use Only

# EIF2S1 Recombinant antibody, PBS Only (Capture)

Catalog Number: 82936-6-PBS



## Basic Information

<b>Catalog Number:</b> 82936-6-PBS	<b>GenBank Accession Number:</b> BC002513	<b>Purification Method:</b> Protein A purification
<b>Size:</b> 100ug , Concentration: 1mg/ml by Nanodrop;	<b>GeneID (NCBI):</b> 1965	<b>CloneNo.:</b> 230245F2
<b>Source:</b> Rabbit	<b>UNIPROT ID:</b> P05198	
<b>Isotype:</b> IgG	<b>Full Name:</b> eukaryotic translation initiation factor 2, subunit 1 alpha, 35kDa	
<b>Immunogen Catalog Number:</b> AG1645	<b>Calculated MW:</b> 36 kDa	

## Applications

**Tested Applications:**  
Cytometric bead array, Sandwich ELISA, Indirect ELISA, Sample test

**Species Specificity:**  
human

## Product Information

82936-6-PBS targets EIF2S1 as part of a matched antibody pair:

MP00076-3: 82936-6-PBS capture and 82936-7-PBS detection (validated in Cytometric bead array)

MP00076-4: 82936-6-PBS capture and 82936-5-PBS detection (validated in Sandwich ELISA)

Unconjugated rabbit recombinant monoclonal antibody in PBS only (BSA and azide free) storage buffer at a concentration of 1 mg/mL, ready for conjugation. Created using Proteintech's proprietary in-house recombinant technology. Recombinant production enables unrivalled batch-to-batch consistency, easy scale-up, and future security of supply.

This conjugation ready format makes antibodies ideal for use in many applications including: ELISAs, multiplex assays requiring matched pairs, mass cytometry, and multiplex imaging applications. Antibody use should be optimized by the end user for each application and assay.

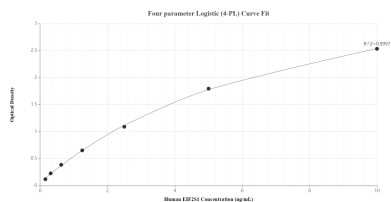
## Storage

**Storage:**  
Store at -80°C.  
**Storage Buffer:**  
100% PBS pH 7.3

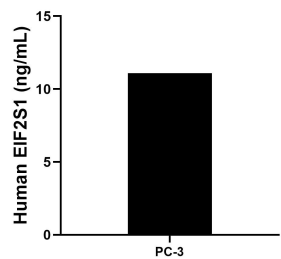
For technical support and original validation data for this product please contact:  
T: 1 (888) 4PTGLAB (1-888-478-4522) (toll free in USA), or 1(312) 455-8498 (outside USA)  
E: [proteintech@ptglab.com](mailto:proteintech@ptglab.com)  
W: [ptglab.com](http://ptglab.com)

This product is exclusively available under Proteintech Group brand and is not available to purchase from any other manufacturer.

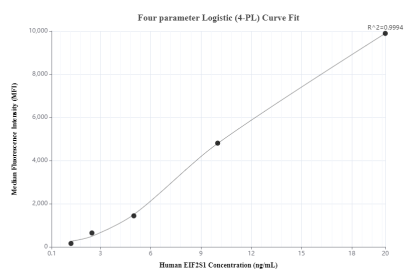
## Selected Validation Data



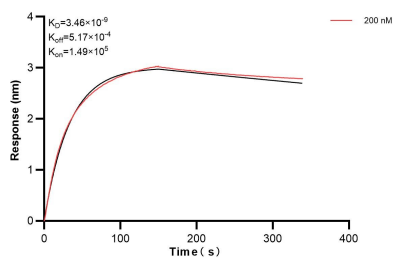
Sandwich ELISA standard curve of MP00076-4, Human EIF2S1 Recombinant Matched Antibody Pair - PBS only. 82936-6-PBS was coated to a plate as the capture antibody and incubated with serial dilutions of standard Ag1645. 82936-5-PBS was HRP conjugated as the detection antibody. Range: 0.156-10 ng/mL



The mean EIF2S1 concentration was determined to be 11.12 ng/mL in PC-3 cell extract based on a 1.20 mg/mL extract load.



Cytometric bead array standard curve of MP00076-3, EIF2S1 Recombinant Matched Antibody Pair, PBS Only. Capture antibody: 82936-6-PBS. Detection antibody: 82936-7-PBS. Standard: Ag1645. Range: 1.25-20 ng/mL



Biolayer interferometry (BLI) kinetic assay of 82936-6-PBS against Human EIF2S1 was performed. The affinity constant is 3.46 nM.