

For Research Use Only

MTF2 Recombinant antibody, PBS Only

Catalog Number: 82944-1-PBS



Basic Information

Catalog Number:

82944-1-PBS

Size:

100ug , Concentration: 1mg/ml by Nanodrop;

Source:

Rabbit

Isotype:

IgG

Immunogen Catalog Number:

AG9384

GenBank Accession Number:

BC010013

GeneID (NCBI):

22823

UNIPROT ID:

Q9Y483

Full Name:

metal response element binding transcription factor 2

Calculated MW:

536 aa, 61 kDa

Observed MW:

55 kDa, 60 kDa, 75 kDa

Purification Method:

Protein A purification

CloneNo.:

230138D10

Applications

Tested Applications:

WB, IF/ICC, Indirect ELISA

Species Specificity:

human

Background Information

MTF2, also named as Metal-response element-binding transcription factor 2, is a 593 amino acid protein. It exists several isoforms and the range of the molecular weight of isoforms are about 55-60 kDa and 29 kDa. MTF2 contains 2 PHD-type zinc fingers and belongs to the Polycomblike family. MTF2 acts by binding to H3K36me3, a mark for transcriptional activation, and recruiting the PRC2 complex, leading to enhance PRC2 H3K27me3 methylation activity and regulates the transcriptional networks during embryonic stem cell self-renewal and differentiation.

Storage

Storage:

Store at -80°C.

Storage Buffer:

PBS Only

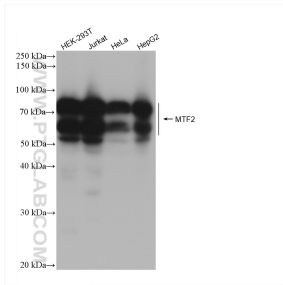
For technical support and original validation data for this product please contact:

T: 1 (888) 4PTGLAB (1-888-478-4522) (toll free in USA), or 1(312) 455-8498 (outside USA)

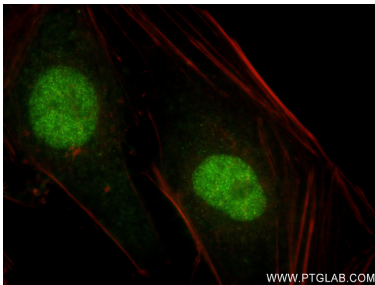
E: proteintech@ptglab.com
W: ptglab.com

This product is exclusively available under Proteintech Group brand and is not available to purchase from any other manufacturer.

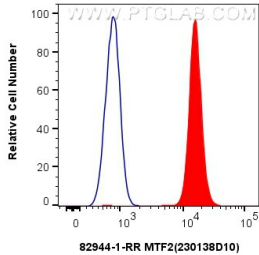
Selected Validation Data



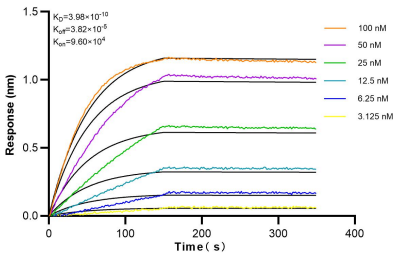
Various lysates were subjected to SDS PAGE followed by western blot with 82944-1-RR (MTF2 antibody) at dilution of 1:4000 incubated at room temperature for 1.5 hours. This data was developed using the same antibody clone with 82944-1-PBS in a different storage buffer formulation.



Immunofluorescent analysis of (4% PFA) fixed HeLa cells using MTF2 antibody (82944-1-RR, Clone: 230138D10) at dilution of 1:200 and CoraLite®488-Conjugated AffiniPure Goat Anti-Rabbit IgG(H+L) (SA00013-2), CL594-Phalloidin (red). This data was developed using the same antibody clone with 82944-1-PBS in a different storage buffer formulation.



1x10⁶ HEK-293 cells were intracellularly stained with 0.25 ug MTF2 Recombinant antibody (82944-1-RR, Clone:230138D10) and CoraLite®488-Conjugated Goat Anti-Rabbit IgG(H+L) (SA00013-2)(red), or 0.25 ug Rabbit IgG Isotype Control Recombinant Antibody (98136-1-RR, Clone: 240953C9) (blue). Cells were fixed and permeabilized with Transcription Factor Staining Buffer Kit (PF00011). This data was developed using the same antibody clone with 82944-1-PBS in a



Biolayer interferometry (BLI) kinetic assays of 82944-1-RR against Human MTF2 were performed. The affinity constant is 0.398 nM.