

For Research Use Only

# MTF2 Recombinant antibody

Catalog Number: 82944-1-RR



## Basic Information

<b>Catalog Number:</b> 82944-1-RR	<b>GenBank Accession Number:</b> BC010013	<b>Purification Method:</b> Protein A purification
<b>Size:</b> 100ul , Concentration: 800 ug/ml by Nanodrop;	<b>GeneID (NCBI):</b> 22823	<b>CloneNo.:</b> 230138D10
<b>Source:</b> Rabbit	<b>UNIPROT ID:</b> Q9Y483	<b>Recommended Dilutions:</b> WB 1:1000-1:8000 IF/ICC 1:50-1:500
<b>Isotype:</b> IgG	<b>Full Name:</b> metal response element binding transcription factor 2	
<b>Immunogen Catalog Number:</b> AG9384	<b>Calculated MW:</b> 536 aa, 61 kDa	
	<b>Observed MW:</b> 55 kDa, 60 kDa, 75 kDa	

## Applications

<b>Tested Applications:</b> WB, IF/ICC, ELISA	<b>Positive Controls:</b>
<b>Species Specificity:</b> human	<b>WB :</b> HEK-293T cells, Jurkat cells, HeLa cells, HepG2 cells <b>IF/ICC :</b> HeLa cells,

## Background Information

MTF2, also named as Metal-response element-binding transcription factor 2, is a 593 amino acid protein. It exists several isoforms and the range of the molecular weight of isoforms are about 55-60 kDa and 29 kDa. MTF2 contains 2 PHD-type zinc fingers and belongs to the Polycomblike family. MTF2 acts by binding to H3K36me3, a mark for transcriptional activation, and recruiting the PRC2 complex, leading to enhance PRC2 H3K27me3 methylation activity and regulates the transcriptional networks during embryonic stem cell self-renewal and differentiation.

## Storage

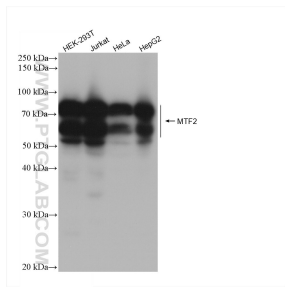
**Storage:**  
Store at -20°C. Stable for one year after shipment.  
**Storage Buffer:**  
PBS with 0.02% sodium azide and 50% glycerol pH 7.3.  
**Aliquoting is unnecessary for -20°C storage**

**\*\*\* 20ul sizes contain 0.1%BSA**

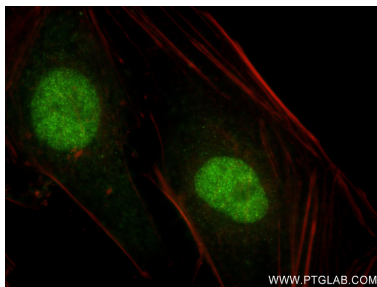
For technical support and original validation data for this product please contact:  
T: 1 (888) 4PTGLAB (1-888-478-4522) (toll free in USA), or 1(312) 455-8498 (outside USA)  
E: [proteintech@ptglab.com](mailto:proteintech@ptglab.com)  
W: [ptglab.com](http://ptglab.com)

This product is exclusively available under Proteintech Group brand and is not available to purchase from any other manufacturer.

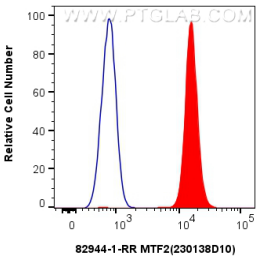
## Selected Validation Data



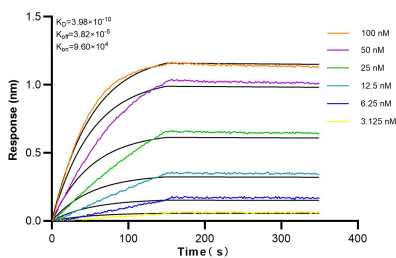
Various lysates were subjected to SDS PAGE followed by western blot with 82944-1-RR (MTF2 antibody) at dilution of 1:4000 incubated at room temperature for 1.5 hours.



Immunofluorescent analysis of (4% PFA) fixed HeLa cells using MTF2 antibody (82944-1-RR, Clone: 230138D10 ) at dilution of 1:200 and CoraLite®488-Conjugated AffiniPure Goat Anti-Rabbit IgG(H+L) (SA00013-2), CL594-Phalloidin (red).



1x10<sup>6</sup> HEK-293 cells were intracellularly stained with 0.25 ug MTF2 Recombinant antibody (82944-1-RR, Clone:230138D10) and CoraLite®488-Conjugated Goat Anti-Rabbit IgG(H+L) (SA00013-2) (red), or 0.25 ug Rabbit IgG Isotype Control Recombinant Antibody (98136-1-RR, Clone: 240953C9) (blue). Cells were fixed and permeabilized with Transcription Factor Staining Buffer Kit (PF00011).



Biolayer interferometry (BLI) kinetic assays of 82944-1-RR against Human MTF2 were performed. The affinity constant is 0.398 nM.