

For Research Use Only

IFT140 Recombinant antibody

Catalog Number: 82947-2-RR



Basic Information

Catalog Number: 82947-2-RR	GenBank Accession Number: BC035577	Purification Method: Protein A purification
Size: 100ul , Concentration: 1000 µg/ml by Nanodrop;	GeneID (NCBI): 9742	CloneNo.: 230231A5
Source: Rabbit	UNIPROT ID: Q96RY7	
Isotype: IgG	Full Name: intraflagellar transport 140 homolog (Chlamydomonas)	
Immunogen Catalog Number: AG11119	Calculated MW: 1462 aa, 165 kDa	

Applications

Tested Applications:
FC, ELISA

Species Specificity:
Human

Background Information

IFT140 is a subunit of intraflagellar transport complex A (IFT-A) which is involved in retrograde ciliary transport. RT-PCR analysis showed it is highly expressed in kidney, moderately in ovary, testis, prostate, and lung. IFT140 is localized to the base and tip of primary cilium. IFT140 has a pivotal role in development and function of ciliated cells, and mutations of IFT140 cause skeletal, renal, and retinal ciliopathies. It had been detected as a single band around 140-165 kDa in different reports. (PMID: 20368623, 22282595)

Storage

Storage:
Store at -20°C. Stable for one year after shipment.
Storage Buffer:
PBS with 0.02% sodium azide and 50% glycerol pH 7.3.
Aliquoting is unnecessary for -20°C storage

*** 20ul sizes contain 0.1% BSA

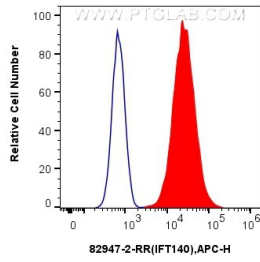
For technical support and original validation data for this product please contact:

T: 1 (888) 4PTGLAB (1-888-478-4522) (toll free in USA), or 1(312) 455-8498 (outside USA)

E: proteintech@ptglab.com
W: ptglab.com

This product is exclusively available under Proteintech Group brand and is not available to purchase from any other manufacturer.

Selected Validation Data



1×10^6 U-251 cells were intracellularly stained with 0.25 μ g Anti-Human IFT140 (82947-2-RR, Clone:230231A5) and APC-Conjugated AffiniPure Goat Anti-Rabbit IgG(H+L) (red), or 0.25 μ g Rabbit IgG control Rabbit PolyAb (30000-0-AP) (blue). Cells were fixed with 4% PFA and permeabilized with Flow Cytometry Perm Buffer (PF00011-C).