

For Research Use Only

# EFNA2 Recombinant antibody

Catalog Number: 82951-1-RR



## Basic Information

<b>Catalog Number:</b> 82951-1-RR	<b>GenBank Accession Number:</b> NM_001405	<b>Purification Method:</b> Protein A purification
<b>Size:</b> 100ul , Concentration: 1000 ug/ml by Nanodrop;	<b>GeneID (NCBI):</b> 1943	<b>CloneNo.:</b> 230251D8
<b>Source:</b> Rabbit	<b>UNIPROT ID:</b> O43921	<b>Recommended Dilutions:</b> IF/ICC 1:50-1:500
<b>Isotype:</b> IgG	<b>Full Name:</b> ephrin-A2	
	<b>Calculated MW:</b> 213 aa, 24 kDa	

## Applications

<b>Tested Applications:</b> IF/ICC, ELISA	<b>Positive Controls:</b> IF/ICC : COLO 205 cells,
<b>Species Specificity:</b> Human	

## Background Information

Ephrin A2, also known as ELF1, Cek7L, and LERK6, is a member of the ephrin ligand family, which binds members of the Eph receptor family. The Eph family members are involved in central nervous system function and in development. The predicted 213-amino acid EFNA2 protein is composed of a signal sequence, a receptor-binding region, a spacer region, and a hydrophobic region. EFNA2 binds to the receptor tyrosine kinases EPHA3, EPHA4 and EPHA5.

## Storage

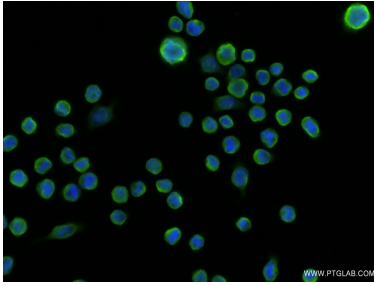
**Storage:**  
Store at -20°C. Stable for one year after shipment.  
**Storage Buffer:**  
PBS with 0.02% sodium azide and 50% glycerol pH 7.3.  
Aliquoting is unnecessary for -20°C storage

\*\*\* 20ul sizes contain 0.1% BSA

For technical support and original validation data for this product please contact:  
T: 1 (888) 4PTGLAB (1-888-478-4522) (toll free in USA), or 1(312) 455-8498 (outside USA)  
E: [proteintech@ptglab.com](mailto:proteintech@ptglab.com)  
W: [ptglab.com](http://ptglab.com)

This product is exclusively available under Proteintech Group brand and is not available to purchase from any other manufacturer.

## Selected Validation Data



Immunofluorescent analysis of (4% PFA) fixed COLO 205 cells using EFNA2 antibody (82951-1-RR, Clone: 230251D8 ) at dilution of 1:200 and CoraLite®488-Conjugated Goat Anti-Rabbit IgG(H+L) (SA00013-2).