

For Research Use Only

Claudin 16 Recombinant monoclonal antibody, PBS Only

Catalog Number: 82954-2-PBS



Basic Information

Catalog Number: 82954-2-PBS	GenBank Accession Number: BC069682	Purification Method: Protein A purification
Size: 100ug, Concentration: 1 mg/ml by Nanodrop;	GeneID (NCBI): 10686	CloneNo.: 251611H8
Source: Rabbit	UNIPROT ID: Q9Y5I7	
Isotype: IgG	Full Name: claudin 16	
	Calculated MW: 305 aa, 34 kDa	
	Observed MW: 34 kDa	

Applications

Tested Applications:
WB, Indirect ELISA

Species Specificity:
human

Background Information

Claudins are a family of proteins that are the most important components of the tight junctions, where they establish the paracellular barrier that controls the flow of molecules in the intercellular space between the cells of an epithelium. They have similar structures with four transmembrane domains, with the N-terminus and the C-terminus in the cytoplasm. Claudin-16 is primarily found in the kidneys and is responsible for regulating the reabsorption of magnesium and calcium ions. Mutations in the Claudin-16 gene can lead to a rare genetic disorder called familial hypomagnesemia with hypercalciuria and nephrocalcinosis (FHHNC).

Storage

Storage:
Store at -80°C.

Storage Buffer:
PBS only, pH7.3

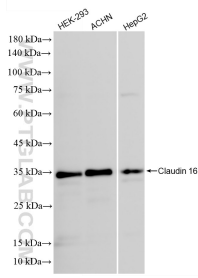
For technical support and original validation data for this product please contact:

T: 1 (888) 4PTGLAB (1-888-478-4522) (toll free in USA), or 1(312) 455-8498 (outside USA)

E: proteintech@ptglab.com
W: ptglab.com

This product is exclusively available under Proteintech Group brand and is not available to purchase from any other manufacturer.

Selected Validation Data



Various lysates were subjected to SDS PAGE followed by western blot with 82954-2-RR (Claudin 16 antibody) at dilution of 1:1000 incubated at room temperature for 1.5 hours. This data was developed using the same antibody clone with 82954-2-PBS in a different storage buffer formulation.