

For Research Use Only

Claudin 16 Recombinant monoclonal antibody

Catalog Number: 82954-2-RR



Basic Information

Catalog Number: 82954-2-RR	GenBank Accession Number: BC069682	Purification Method: Protein A purification
Size: 100ul , Concentration: 1000 µg/ml by Nanodrop;	GeneID (NCBI): 10686	CloneNo.: 251611H8
Source: Rabbit	UNIPROT ID: Q9Y5I7	Recommended Dilutions: WB: 1:500-1:2000
Isotype: IgG	Full Name: claudin 16	
	Calculated MW: 305 aa, 34 kDa	
	Observed MW: 34 kDa	

Applications

Tested Applications: WB, ELISA	Positive Controls: WB : HEK-293 cells, ACHN cells, HepG2 cells
Species Specificity: human	

Background Information

Claudins are a family of proteins that are the most important components of the tight junctions, where they establish the paracellular barrier that controls the flow of molecules in the intercellular space between the cells of an epithelium. They have similar structures with four transmembrane domains, with the N-terminus and the C-terminus in the cytoplasm. Claudin-16 is primarily found in the kidneys and is responsible for regulating the reabsorption of magnesium and calcium ions. Mutations in the Claudin-16 gene can lead to a rare genetic disorder called familial hypomagnesemia with hypercalciuria and nephrocalcinosis (FHHNC).

Storage

Storage:
Store at -20°C. Stable for one year after shipment.
Storage Buffer:
PBS with 0.02% sodium azide and 50% glycerol, pH7.3
Aliquoting is unnecessary for -20°C storage

*** 20ul sizes contain 0.1% BSA

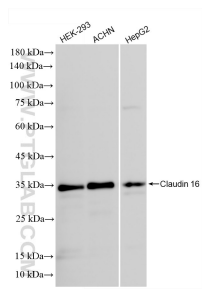
For technical support and original validation data for this product please contact:

T: 1 (888) 4PTGLAB (1-888-478-4522) (toll free in USA), or 1(312) 455-8498 (outside USA)

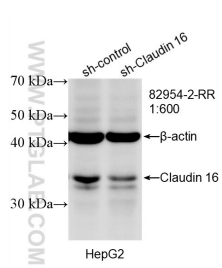
E: proteintech@ptglab.com
W: ptglab.com

This product is exclusively available under Proteintech Group brand and is not available to purchase from any other manufacturer.

Selected Validation Data



Various lysates were subjected to SDS PAGE followed by western blot with 82954-2-RR (Claudin 16 antibody) at dilution of 1:1000 incubated at room temperature for 1.5 hours.



WB result of Claudin 16 antibody (82954-2-RR; 1:600; incubated at room temperature for 1.5 hours) with sh-Control and sh-Claudin 16 transfected HepG2 cells.