

For Research Use Only

MAX Recombinant antibody

Catalog Number: 82958-1-RR



Basic Information

Catalog Number: 82958-1-RR	GenBank Accession Number: BC003525	Purification Method: Protein A purification
Size: 100ul , Concentration: 800 µg/ml by Nanodrop;	GeneID (NCBI): 4149	CloneNo.: 230215E3
Source: Rabbit	UNIPROT ID: P61244	Recommended Dilutions: WB 1:1000-1:8000
Isotype: IgG	Full Name: MYC associated factor X	
Immunogen Catalog Number: AG0680	Calculated MW: 18 kDa	
	Observed MW: 22 kDa	

Applications

Tested Applications: WB, ELISA	Positive Controls: WB : PC-3 cells,
Species Specificity: human	

Background Information

Max, a member of MAX family, contains a basic helix-loop-helix (bHLH) domain, is a transcription regulator. MAX can form a sequence-specific DNA-binding protein complex with MYC or MAD which recognizes the core sequence 5'-CAC[GA]TG-3'. The MYC-MAX complex is a transcriptional activator, while the MAD-MAX complex is a repressor. MAX could dimerized with another bHLH protein to form a heterodimer, such MYC or MAD. Thus bands recognized by this antibody much larger than predicted.

Storage

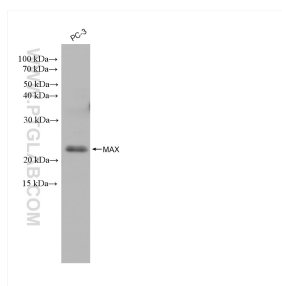
Storage:
Store at -20°C. Stable for one year after shipment.
Storage Buffer:
PBS with 0.02% sodium azide and 50% glycerol pH 7.3.
Aliquoting is unnecessary for -20°C storage

*** 20ul sizes contain 0.1% BSA

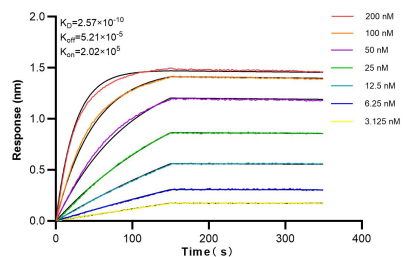
For technical support and original validation data for this product please contact:
T: 1 (888) 4PTGLAB (1-888-478-4522) (toll free in USA), or 1(312) 455-8498 (outside USA)
E: proteintech@ptglab.com
W: ptglab.com

This product is exclusively available under Proteintech Group brand and is not available to purchase from any other manufacturer.

Selected Validation Data



Various lysates were subjected to SDS PAGE followed by western blot with 82958-1-RR (MAX antibody) at dilution of 1:4000 incubated at room temperature for 1.5 hours.



Biolayer interferometry (BLI) kinetic assays of 82958-1-RR against Human MAX were performed. The affinity constant is 0.257 nM.