

For Research Use Only

# MAX Recombinant antibody, PBS Only (Detector)

Catalog Number: 82958-3-PBS



## Basic Information

<b>Catalog Number:</b> 82958-3-PBS	<b>GenBank Accession Number:</b> BC003525	<b>Purification Method:</b> Protein A purification
<b>Size:</b> 100ug , Concentration: 1mg/ml by Nanodrop;	<b>GeneID (NCBI):</b> 4149	<b>CloneNo.:</b> 230215C6
<b>Source:</b> Rabbit	<b>UNIPROT ID:</b> P61244	<b>Affinity:</b> $K_D = 2.32 \times 10^{-10}M$
<b>Isotype:</b> IgG	<b>Full Name:</b> MYC associated factor X	$K_{off} = 8.10 \times 10^{-5}M$
<b>Immunogen Catalog Number:</b> AG0680	<b>Calculated MW:</b> 18 kDa	$K_{on} = 3.49 \times 10^5M$

## Applications

**Tested Applications:**  
Indirect ELISA, Cytometric bead array

**Species Specificity:**  
Human

## Product Information

82958-3-PBS targets MAX as part of a matched antibody pair:

MP00126-1: 82958-2-PBS capture and 82958-3-PBS detection (validated in Cytometric bead array)

MP00126-2: 82958-4-PBS capture and 82958-3-PBS detection (validated in Cytometric bead array)

MP00126-3: 82958-5-PBS capture and 82958-3-PBS detection (validated in Cytometric bead array)

Unconjugated rabbit recombinant monoclonal antibody in PBS only (BSA and azide free) storage buffer at a concentration of 1 mg/mL, ready for conjugation. Created using Proteintech's proprietary in-house recombinant technology. Recombinant production enables unrivalled batch-to-batch consistency, easy scale-up, and future security of supply.

This conjugation ready format makes antibodies ideal for use in many applications including: ELISAs, multiplex assays requiring matched pairs, mass cytometry, and multiplex imaging applications. Antibody use should be optimized by the end user for each application and assay.

## Storage

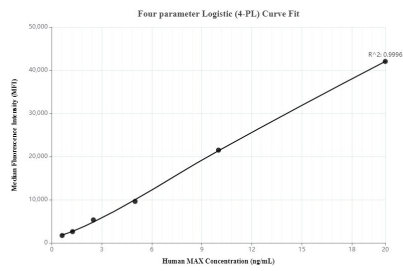
**Storage:**  
Store at -80°C.

**Storage Buffer:**  
100% PBS pH 7.3

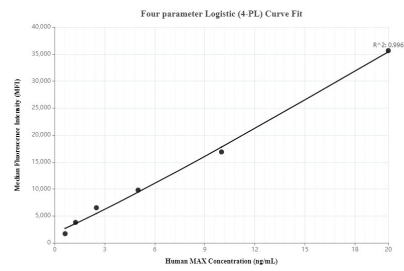
For technical support and original validation data for this product please contact:  
T: 1 (888) 4PTGLAB (1-888-478-4522) (toll free in USA), or 1(312) 455-8498 (outside USA)  
E: [proteintech@ptglab.com](mailto:proteintech@ptglab.com)  
W: [ptglab.com](http://ptglab.com)

This product is exclusively available under Proteintech Group brand and is not available to purchase from any other manufacturer.

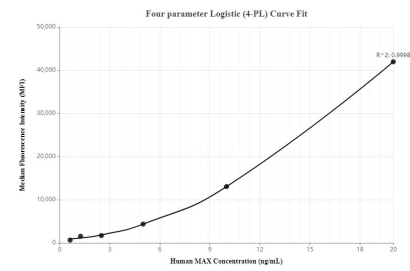
## Selected Validation Data



Cytometric bead array standard curve of MP00126-1, MAX Recombinant Matched Antibody Pair - PBS only. Capture antibody: 82958-2-PBS. Detection antibody: 82958-3-PBS. Standard: Ag0680. Range: 0.625-20 ng/mL



Cytometric bead array standard curve of MP00126-2, MAX Recombinant Matched Antibody Pair - PBS only. Capture antibody: 82958-4-PBS. Detection antibody: 82958-3-PBS. Standard: Ag0680. Range: 0.625-20 ng/mL



Cytometric bead array standard curve of MP00126-3, MAX Recombinant Matched Antibody Pair - PBS only. Capture antibody: 82958-5-PBS. Detection antibody: 82958-3-PBS. Standard: Ag0680. Range: 0.625-20 ng/mL