

For Research Use Only

SCN3B Recombinant antibody, PBS Only (Capture)

Catalog Number: 82959-2-PBS



Basic Information

Catalog Number: 82959-2-PBS	GenBank Accession Number: BC126265	Purification Method: Protein A purification
Size: 100ug , Concentration: 1mg/ml by Nanodrop;	GeneID (NCBI): 55800	CloneNo.: 230316A4
Source: Rabbit	UNIPROT ID: Q9NY72	
Isotype: IgG	Full Name: sodium channel, voltage-gated, type III, beta	
Immunogen Catalog Number: AG23201		

Applications

Tested Applications:
Cytometric bead array, Sandwich ELISA, Indirect ELISA, Sample test

Species Specificity:
human

Product Information

82959-2-PBS targets SCN3B as part of a matched antibody pair:

MP00132-1: 82959-2-PBS capture and 82959-6-PBS detection (validated in Cytometric bead array)

MP00132-2: 82959-2-PBS capture and 82959-5-PBS detection (validated in Cytometric bead array)

MP00132-4: 82959-2-PBS capture and 82959-8-PBS detection (validated in Sandwich ELISA)

Unconjugated rabbit recombinant monoclonal antibody in PBS only (BSA and azide free) storage buffer at a concentration of 1 mg/mL, ready for conjugation. Created using Proteintech's proprietary in-house recombinant technology. Recombinant production enables unrivalled batch-to-batch consistency, easy scale-up, and future security of supply.

This conjugation ready format makes antibodies ideal for use in many applications including: ELISAs, multiplex assays requiring matched pairs, mass cytometry, and multiplex imaging applications. Antibody use should be optimized by the end user for each application and assay.

Storage

Storage:
Store at -80°C.
Storage Buffer:
100% PBS pH 7.3

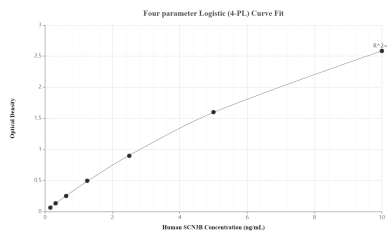
For technical support and original validation data for this product please contact:

T: 1 (888) 4PTGLAB (1-888-478-4522) (toll free in USA), or 1(312) 455-8498 (outside USA)

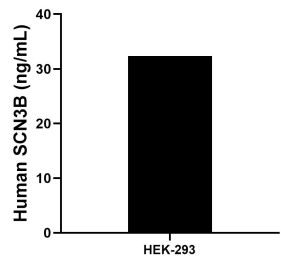
E: proteintech@ptglab.com
W: ptglab.com

This product is exclusively available under Proteintech Group brand and is not available to purchase from any other manufacturer.

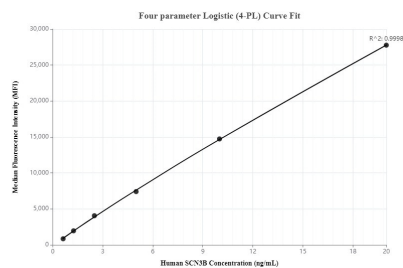
Selected Validation Data



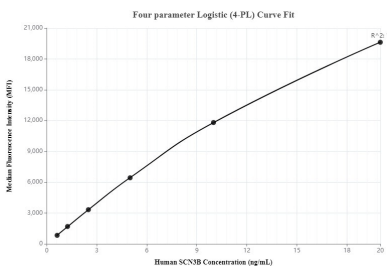
Sandwich ELISA standard curve of MP00132-4, Human SCN3B Recombinant Matched Antibody Pair - PBS only. 82959-2-PBS was coated to a plate as the capture antibody and incubated with serial dilutions of standard Ag23201. 82959-8-PBS was HRP conjugated as the detection antibody. Range: 0.156-10 ng/mL



The mean SCN3B concentration was determined to be 32.36 ng/mL in HEK-293 cell extract based on a 3.4 mg/mL extract load.



Cytometric bead array standard curve of MP00132-1, SCN3B Recombinant Matched Antibody Pair, PBS Only. Capture antibody: 82959-2-PBS. Detection antibody: 82959-6-PBS. Standard: Ag23201. Range: 0.625-20 ng/mL



Cytometric bead array standard curve of MP00132-2, SCN3B Recombinant Matched Antibody Pair, PBS Only. Capture antibody: 82959-2-PBS. Detection antibody: 82959-5-PBS. Standard: Ag23201. Range: 0.625-20 ng/mL