

For Research Use Only

RAB32 Recombinant antibody, PBS Only (Capture/Detector)

Catalog Number: 82960-4-PBS



Basic Information

Catalog Number: 82960-4-PBS	GenBank Accession Number: BC015061	Purification Method: Protein A purification
Size: 100ug , Concentration: 1mg/ml by Nanodrop;	GeneID (NCBI): 10981	CloneNo.: 230315F1
Source: Rabbit	UNIPROT ID: Q13637	
Isotype: IgG	Full Name: RAB32, member RAS oncogene family	
Immunogen Catalog Number: AG1450	Calculated MW: 25 kDa	

Applications

Tested Applications:
Cytometric bead array, Sandwich ELISA, Indirect ELISA, Sample test

Species Specificity:
human

Product Information

82960-4-PBS targets RAB32 as part of a matched antibody pair:

MP00043-1: 82960-4-PBS capture and 82960-2-PBS detection (validated in Cytometric bead array)

MP00043-2: 82960-3-PBS capture and 82960-4-PBS detection (validated in Cytometric bead array)

MP00043-3: 82960-3-PBS capture and 82960-4-PBS detection (validated in Sandwich ELISA)

Unconjugated rabbit recombinant monoclonal antibody in PBS only (BSA and azide free) storage buffer at a concentration of 1 mg/mL, ready for conjugation. Created using Proteintech's proprietary in-house recombinant technology. Recombinant production enables unrivalled batch-to-batch consistency, easy scale-up, and future security of supply.

This conjugation ready format makes antibodies ideal for use in many applications including: ELISAs, multiplex assays requiring matched pairs, mass cytometry, and multiplex imaging applications. Antibody use should be optimized by the end user for each application and assay.

Storage

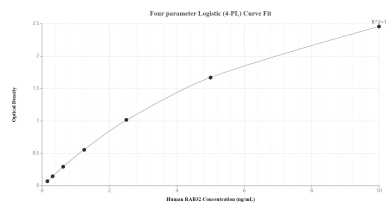
Storage:
Store at -80°C.

Storage Buffer:
100% PBS pH 7.3

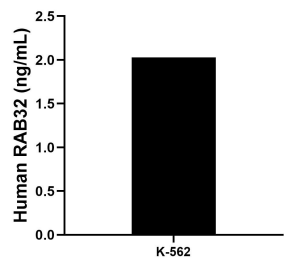
For technical support and original validation data for this product please contact:
T: 1 (888) 4PTGLAB (1-888-478-4522) (toll free in USA), or 1(312) 455-8498 (outside USA)
E: proteintech@ptglab.com
W: ptglab.com

This product is exclusively available under Proteintech Group brand and is not available to purchase from any other manufacturer.

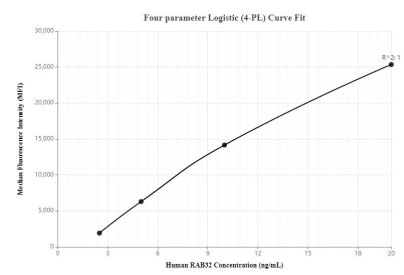
Selected Validation Data



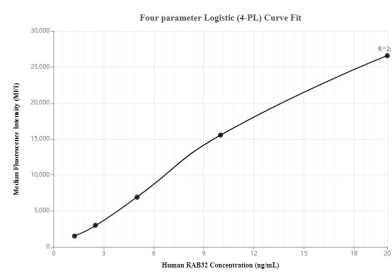
Sandwich ELISA standard curve of MP00043-3, Human RAB32 Recombinant Matched Antibody Pair - PBS only. 82960-3-PBS was coated to a plate as the capture antibody and incubated with serial dilutions of standard Ag1450. 82960-4-PBS was HRP conjugated as the detection antibody. Range: 0.156-10 ng/mL



The mean RAB32 concentration was determined to be 2.03 ng/mL in K-562 cell extract based on a 4.50 mg/mL extract load.



Cytometric bead array standard curve of MP00043-1, RAB32 Recombinant Matched Antibody Pair, PBS Only. Capture antibody: 82960-4-PBS. Detection antibody: 82960-2-PBS. Standard: Ag1450. Range: 2.5-20 ng/mL



Cytometric bead array standard curve of MP00043-2, RAB32 Recombinant Matched Antibody Pair, PBS Only. Capture antibody: 82960-3-PBS. Detection antibody: 82960-4-PBS. Standard: Ag1450. Range: 1.25-20 ng/mL