

For Research Use Only

PGM5 Recombinant antibody

Catalog Number: 82965-1-RR



Basic Information

Catalog Number: 82965-1-RR	GenBank Accession Number: NM_021965	Purification Method: Protein A purification
Size: 100ul , Concentration: 1000 ug/ml by Nanodrop;	GeneID (NCBI): 5239	CloneNo.: 230206C7
Source: Rabbit	UNIPROT ID: Q15124	Recommended Dilutions: WB 1:5000-1:50000 IHC 1:1000-1:4000
Isotype: IgG	Full Name: phosphoglucomutase 5	
Immunogen Catalog Number: AG34399	Calculated MW: 62 kDa	
	Observed MW: 62 kDa	

Applications

Tested Applications: WB, IHC, FC (Intra), ELISA	Positive Controls:
Species Specificity: human	WB : HeLa cells, HepG2 cells, PC-3 cells
	IHC : human stomach tissue,

Note-IHC: suggested antigen retrieval with **TE buffer pH 9.0; (*) Alternatively, antigen retrieval may be performed with citrate buffer pH 6.0**

Background Information

Phosphoglucomutase-like protein 5 (also known as aciculin) is an enzyme encoded by the PGM5 gene. Gene functional studies show that PGM5 is similar to PGM1 but lacks enzymatic activity. PGM5 is tightly associated with the actin cytoskeleton and has primarily been investigated as an adhesion protein. It also functions as a cytoskeletal component of cell-matrix and cell-cell contacts in muscle and non-muscle cells. (PMID: 35819729)

Storage

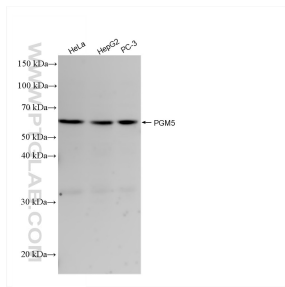
Storage:
Store at -20°C. Stable for one year after shipment.
Storage Buffer:
PBS with 0.02% sodium azide and 50% glycerol pH 7.3.
Aliquoting is unnecessary for -20°C storage

*** 20ul sizes contain 0.1% BSA

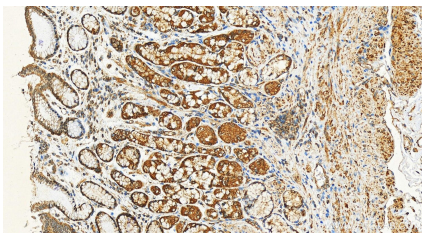
For technical support and original validation data for this product please contact:
T: 1 (888) 4PTGLAB (1-888-478-4522) (toll free in USA), or 1(312) 455-8498 (outside USA)
E: proteintech@ptglab.com
W: ptglab.com

This product is exclusively available under Proteintech Group brand and is not available to purchase from any other manufacturer.

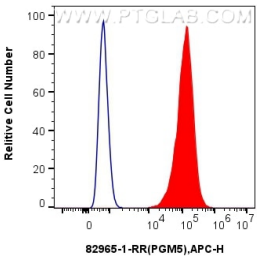
Selected Validation Data



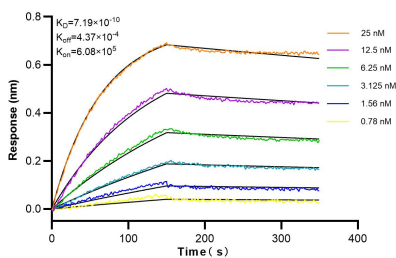
Various lysates were subjected to SDS PAGE followed by western blot with 82965-1-RR (PGM5 antibody) at dilution of 1:10000 incubated at room temperature for 1.5 hours.



Immunohistochemical analysis of paraffin-embedded human normal stomach slide using 82965-1-RR (PGM5 antibody) at dilution of 1:2000 (under 20x lens). Heat mediated antigen retrieval with Tris-EDTA buffer (pH 9.0).



1x10⁶ PC-3 cells were intracellularly stained with 0.25 ug Anti-Human PGM5 (82965-1-RR, Clone:230206C7) and APC-Conjugated AffiniPure Goat Anti-Rabbit IgG(H+L)(red), or 0.25 ug Rabbit IgG control Rabbit PolyAb (30000-O-AP) (blue). Cells were fixed with 4% PFA and permeabilized with Flow Cytometry Perm Buffer (PF00011-C).



Biolayer interferometry (BLI) kinetic assays of 82965-1-RR against Human PGM5 were performed. The affinity constant is 0.719 nM.