

For Research Use Only

# ARHGEF19 Recombinant antibody, PBS Only



Catalog Number: 82966-2-PBS

## Basic Information

<b>Catalog Number:</b> 82966-2-PBS	<b>GenBank Accession Number:</b> BC040640	<b>Purification Method:</b> Protein A purification
<b>Size:</b> 100ug , Concentration: 1mg/ml by Nanodrop;	<b>GeneID (NCBI):</b> 128272	<b>CloneNo.:</b> 230290F5
<b>Source:</b> Rabbit	<b>UNIPROT ID:</b> Q8IW93	
<b>Isotype:</b> IgG	<b>Full Name:</b> Rho guanine nucleotide exchange factor (GEF) 19	
<b>Immunogen Catalog Number:</b> AG11645	<b>Calculated MW:</b> 802 aa, 89 kDa	

## Applications

**Tested Applications:**  
Indirect ELISA, IF/ICC

**Species Specificity:**  
human

## Background Information

Rho guanine nucleotide exchange factors (RHOGEFs) are proteins that could regulate Rho GTPases, which can be involved in a variety of physiological processes, such as survival, development, differentiation, and motility. ARHGEF19 also known as WGEF, is a member of the RhoGEF family. ARHGEF19 contains two identical functional domains, including the Dbl homology (DH) and pleckstrin homology (PH) domain(PMID:32993957). ARHGEF19 was highly expressed in human breast cancer(PMID: 34813497).

## Storage

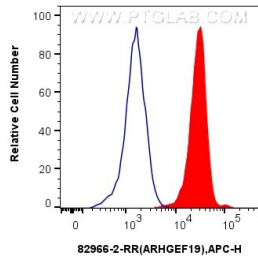
**Storage:**  
Store at -80°C.

**Storage Buffer:**  
PBS Only

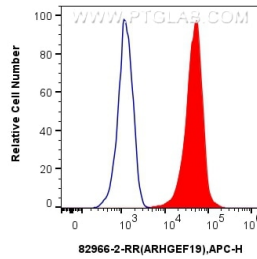
For technical support and original validation data for this product please contact:  
T: 1 (888) 4PTGLAB (1-888-478-4522) (toll free in USA), or 1(312) 455-8498 (outside USA)  
E: [proteintech@ptglab.com](mailto:proteintech@ptglab.com)  
W: [ptglab.com](http://ptglab.com)

This product is exclusively available under Proteintech Group brand and is not available to purchase from any other manufacturer.

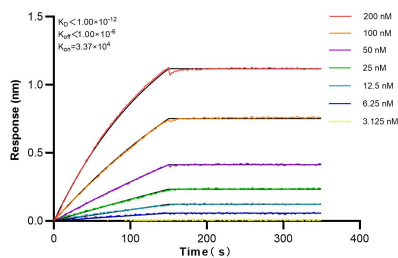
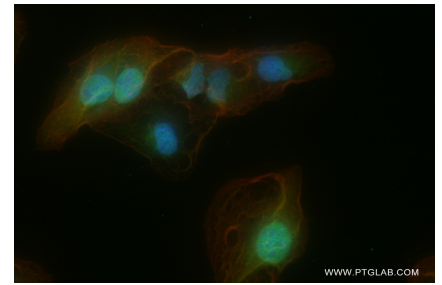
## Selected Validation Data



$1 \times 10^6$  U2OS cells were intracellularly stained with 0.25  $\mu$ g Anti-Human ARHGEF19 (82966-2-RR, Clone:230290F5) and APC-Conjugated AffiniPure Goat Anti-Rabbit IgG(H+L)(red), or 0.25  $\mu$ g Rabbit IgG control Rabbit PolyAb (30000-O-AP) (blue). Cells were fixed and permeabilized with True-Nuclear Transcription Factor Buffer Set. This data was developed using the same antibody clone with 82966-2-PBS in a different storage buffer formulation.



$1 \times 10^6$  HeLa cells were intracellularly stained with 0.25  $\mu$ g Anti-Human ARHGEF19 (82966-2-RR, Clone:230290F5) and APC-Conjugated AffiniPure Goat Anti-Rabbit IgG(H+L)(red), or 0.25  $\mu$ g Control Antibody(blue). Cells were fixed and permeabilized with True-Nuclear Transcription Factor Buffer Set. This data was developed using the same antibody clone with 82966-2-PBS in a different storage buffer formulation.



Biolayer interferometry (BLI) kinetic assays of 82966-2-RR against Human ARHGEF19 were performed. The affinity constant is below 1 pM.