

For Research Use Only

# CTGF Recombinant antibody, PBS Only

Catalog Number: 82976-1-PBS

Featured Product



## Basic Information

### Catalog Number:

82976-1-PBS

### Size:

100ug, Concentration: 1mg/ml by Nanodrop;

### Source:

Rabbit

### Isotype:

IgG

### GenBank Accession Number:

NM\_001901

### GeneID (NCBI):

1490

### UNIPROT ID:

P29279

### Full Name:

connective tissue growth factor

### Calculated MW:

38 kDa

### Observed MW:

35 kDa

### Purification Method:

Protein A purification

### CloneNo.:

230324B12

## Applications

### Tested Applications:

WB, Indirect ELISA

### Species Specificity:

human

## Background Information

CTGF, also known as CCN2, is a member of the CCN family of matricellular proteins. CTGF, a cysteine-rich, matrix-associated, heparin-binding protein, is widely expressed in various human tissues and organs. CTGF has important roles in many biological processes, including cell adhesion, migration, proliferation, angiogenesis, skeletal development, and tissue wound repair, and is critically involved in fibrotic disease and several forms of cancers.

## Storage

### Storage:

Store at -80°C.

### Storage Buffer:

PBS only, pH7.3

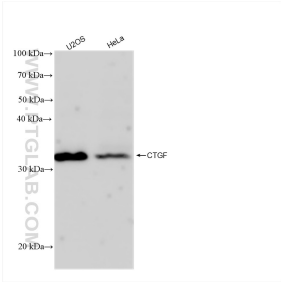
For technical support and original validation data for this product please contact:

T: 1 (888) 4PTGLAB (1-888-478-4522) (toll free in USA), or 1(312) 455-8498 (outside USA)

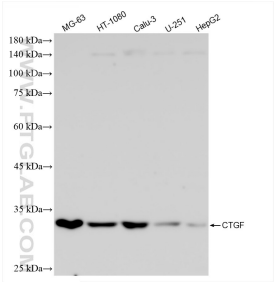
E: [proteintech@ptglab.com](mailto:proteintech@ptglab.com)  
W: [ptglab.com](http://ptglab.com)

This product is exclusively available under Proteintech Group brand and is not available to purchase from any other manufacturer.

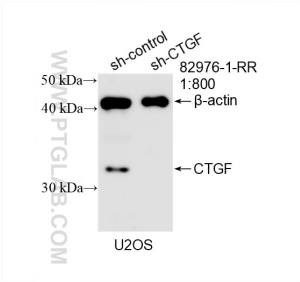
Selected Validation Data



Various lysates were subjected to SDS PAGE followed by western blot with 82976-1-RR (CTGF antibody) at dilution of 1:2000 incubated at room temperature for 1.5 hours. This data was developed using the same antibody clone with 82976-1-PBS in a different storage buffer formulation.



Various lysates were subjected to SDS PAGE followed by western blot with 82976-1-RR (CTGF antibody) at dilution of 1:1000 incubated at room temperature for 1.5 hours. This data was developed using the same antibody clone with 82976-1-PBS in a different storage buffer formulation.



WB result of CTGF antibody (82976-1-RR; 1:800; incubated at room temperature for 1.5 hours) with sh-Control and sh-CTGF transfected U2OS cells. This data was developed using the same antibody clone with 82976-1-PBS in a different storage buffer formulation.