

For Research Use Only

CTGF Recombinant antibody

Catalog Number: 82976-1-RR

Featured Product



Basic Information

Catalog Number:

82976-1-RR

Size:

100ul , Concentration: 200 ug/ml by Nanodrop;

Source:

Rabbit

Isotype:

IgG

GenBank Accession Number:

NM_001901

GeneID (NCBI):

1490

UNIPROT ID:

P29279

Full Name:

connective tissue growth factor

Calculated MW:

38 kDa

Observed MW:

35 kDa

Purification Method:

Protein A purification

CloneNo.:

230324B12

Recommended Dilutions:

WB 1:500-1:2000

Applications

Tested Applications:

WB, ELISA

Species Specificity:

human

Positive Controls:

WB : MG-63 cells, U2OS cells, HT-1080 cells, Calu-3 cells, U-251 cells, HepG2 cells, HeLa cells

Background Information

CTGF, also known as CCN2, is a member of the CCN family of matricellular proteins. CTGF, a cysteine-rich, matrix-associated, heparin-binding protein, is widely expressed in various human tissues and organs. CTGF has important roles in many biological processes, including cell adhesion, migration, proliferation, angiogenesis, skeletal development, and tissue wound repair, and is critically involved in fibrotic disease and several forms of cancers.

Storage

Storage:

Store at -20°C. Stable for one year after shipment.

Storage Buffer:

PBS with 0.02% sodium azide and 50% glycerol, pH7.3

Aliquoting is unnecessary for -20°C storage

*** 20ul sizes contain 0.1% BSA

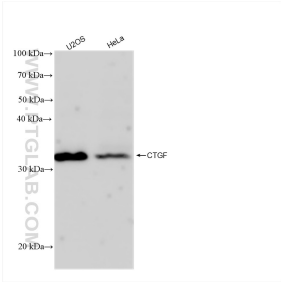
For technical support and original validation data for this product please contact:

T: 1 (888) 4PTGLAB (1-888-478-4522) (toll free in USA), or 1(312) 455-8498 (outside USA)

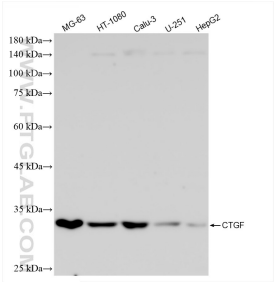
E: proteintech@ptglab.com
W: ptglab.com

This product is exclusively available under Proteintech Group brand and is not available to purchase from any other manufacturer.

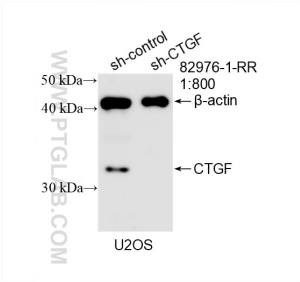
Selected Validation Data



Various lysates were subjected to SDS PAGE followed by western blot with 82976-1-RR (CTGF antibody) at dilution of 1:2000 incubated at room temperature for 1.5 hours.



Various lysates were subjected to SDS PAGE followed by western blot with 82976-1-RR (CTGF antibody) at dilution of 1:1000 incubated at room temperature for 1.5 hours.



WB result of CTGF antibody (82976-1-RR; 1:800; incubated at room temperature for 1.5 hours) with sh-Control and sh-CTGF transfected U2OS cells.