

For Research Use Only

# LIMK2 Recombinant antibody, PBS Only (Capture)

Catalog Number: 82977-2-PBS



## Basic Information

<b>Catalog Number:</b> 82977-2-PBS	<b>GenBank Accession Number:</b> BC013051	<b>Purification Method:</b> Protein A purification
<b>Size:</b> 100ug , Concentration: 1 mg/ml by Nanodrop;	<b>GeneID (NCBI):</b> 3985	<b>CloneNo.:</b> 230283H8
<b>Source:</b> Rabbit	<b>UNIPROT ID:</b> P53671	
<b>Isotype:</b> IgG	<b>Full Name:</b> LIM domain kinase 2	
<b>Immunogen Catalog Number:</b> AG3011	<b>Calculated MW:</b> 686 aa, 78 kDa	

## Applications

**Tested Applications:**  
Sandwich ELISA, Indirect ELISA, Sample test

**Species Specificity:**  
human

## Product Information

82977-2-PBS targets LIMK2 as part of a matched antibody pair:

MP01226-2: 82977-2-PBS capture and 82977-3-PBS detection (validated in Sandwich ELISA)

Unconjugated rabbit recombinant monoclonal antibody in PBS only (BSA and azide free) storage buffer at a concentration of 1 mg/mL, ready for conjugation. Created using Proteintech's proprietary in-house recombinant technology. Recombinant production enables unrivalled batch-to-batch consistency, easy scale-up, and future security of supply.

This conjugation ready format makes antibodies ideal for use in many applications including: ELISAs, multiplex assays requiring matched pairs, mass cytometry, and multiplex imaging applications. Antibody use should be optimized by the end user for each application and assay.

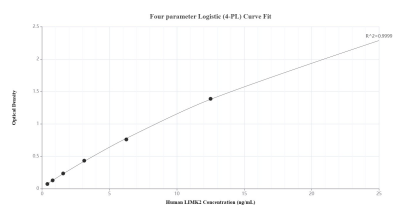
## Storage

**Storage:**  
Store at -80°C.  
**Storage Buffer:**  
PBS Only

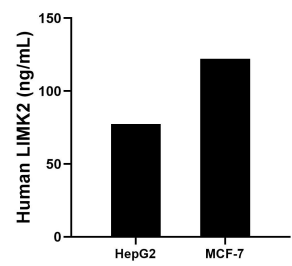
For technical support and original validation data for this product please contact:  
T: 1 (888) 4PTGLAB (1-888-478-4522) (toll free in USA), or 1(312) 455-8498 (outside USA)  
E: proteintech@ptglab.com  
W: ptglab.com

This product is exclusively available under Proteintech Group brand and is not available to purchase from any other manufacturer.

## Selected Validation Data



Sandwich ELISA standard curve of MP01226-2, Human LIMK2 Recombinant Matched Antibody Pair - PBS only. 82977-2-PBS was coated to a plate as the capture antibody and incubated with serial dilutions of standard Ag3011. 82977-3-PBS was HRP conjugated as the detection antibody. Range: 0.39-25 ng/mL



The mean LIMK2 concentration was determined to be 77.33 ng/mL in HepG2 cell extract based on a 1.20 mg/mL extract load and 122.10 ng/mL in MCF-7 cell extract based on a 1.20 mg/mL extract load.