

For Research Use Only

TMEM132E Recombinant antibody, PBS Only (Detector)

Catalog Number: 82983-2-PBS



Basic Information

Catalog Number:

82983-2-PBS

Size:

100ug, Concentration: 1mg/ml by Nanodrop;

Source:

Rabbit

Isotype:

IgG

Immunogen Catalog Number:

AG26772

GenBank Accession Number:

NM_001304438

GeneID (NCBI):

124842

UNIPROT ID:

Q6IEE7

Full Name:

transmembrane protein 132E

Calculated MW:

116 kDa

Observed MW:

100-110 kDa

Purification Method:

Protein A purification

CloneNo.:

230525E12

Applications

Tested Applications:

WB, Cytometric bead array, Indirect ELISA

Species Specificity:

human, mouse

Product Information

82983-2-PBS targets TMEM132E as part of a matched antibody pair:

MP00054-2: 82983-1-PBS capture and 82983-2-PBS detection (validated in Cytometric bead array)

Unconjugated rabbit recombinant monoclonal antibody in PBS only (BSA and azide free) storage buffer at a concentration of 1 mg/mL, ready for conjugation. Created using Proteintech's proprietary in-house recombinant technology. Recombinant production enables unrivalled batch-to-batch consistency, easy scale-up, and future security of supply.

This conjugation ready format makes antibodies ideal for use in many applications including: ELISAs, multiplex assays requiring matched pairs, mass cytometry, and multiplex imaging applications. Antibody use should be optimized by the end user for each application and assay.

Background Information

Transmembrane protein 132E (TMEM132E) is a member of the TMEM132 family which also include TMEM132A, TMEM132B, TMEM132C, TMEM132D (PMID: 29088312). The gene of TMEM132E is located within the DFNB99 locus on chromosome 17q12 and is highly expressed in the inner ear and other tissues including brain, kidney, lung, liver, spleen, heart, small intestine, colon, thymus, and stomach (PMID: 31656313). A variant of TMEM132E has been associated with autosomal-recessive nonsyndromic hearing loss DFNB99 (PMID: 25331638).

Storage

Storage:

Store at -80°C.

Storage Buffer:

100% PBS pH 7.3

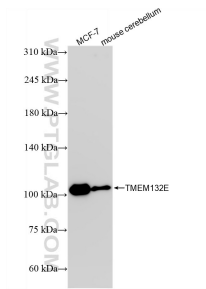
For technical support and original validation data for this product please contact:

T: 1 (888) 4PTGLAB (1-888-478-4522) (toll free in USA), or 1(312) 455-8498 (outside USA)

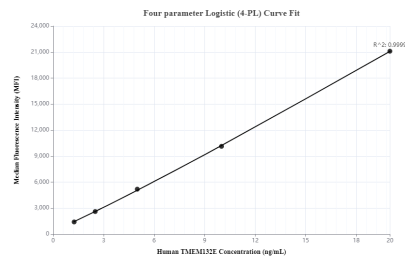
E: proteintech@ptglab.com
W: ptglab.com

This product is exclusively available under Proteintech Group brand and is not available to purchase from any other manufacturer.

Selected Validation Data



Various lysates were subjected to SDS PAGE followed by western blot with 82983-2-RR (TMEM132E antibody) at dilution of 1:2000 incubated at room temperature for 1.5 hours. This data was developed using the same antibody clone with 82983-2-PBS in a different storage buffer formulation.



Cytometric bead array standard curve of MP00054-2, TMEM132E Recombinant Matched Antibody Pair, PBS Only. Capture antibody: 82983-1-PBS. Detection antibody: 82983-2-PBS. Standard: Ag26772. Range: 1.25-20 ng/mL

Biolayer interferometry (BLI) kinetic assays of 82983-2-RR against Human TMEM132E were performed. The affinity constant is 0.254 nM.