

For Research Use Only

MMP3 Recombinant antibody, PBS Only (Detector)



Catalog Number: 82984-4-PBS

Basic Information

Catalog Number: 82984-4-PBS	GenBank Accession Number: BC074815	Purification Method: Protein A purification
Size: 100ug , Concentration: 1mg/ml by Nanodrop;	GeneID (NCBI): 4314	CloneNo.: 230535G8
Source: Rabbit	UNIPROT ID: P08254	
Isotype: IgG	Full Name: matrix metalloproteinase 3 (stromelysin 1, progelatinase)	

Applications

Tested Applications:
Cytometric bead array, Indirect ELISA, WB

Species Specificity:
human

Product Information

82984-4-PBS targets MMP3 as part of a matched antibody pair:

MP00083-3: 82984-1-PBS capture and 82984-4-PBS detection (validated in Cytometric bead array)

Unconjugated rabbit recombinant monoclonal antibody in PBS only (BSA and azide free) storage buffer at a concentration of 1 mg/mL, ready for conjugation. Created using Proteintech's proprietary in-house recombinant technology. Recombinant production enables unrivalled batch-to-batch consistency, easy scale-up, and future security of supply.

This conjugation ready format makes antibodies ideal for use in many applications including: ELISAs, multiplex assays requiring matched pairs, mass cytometry, and multiplex imaging applications. Antibody use should be optimized by the end user for each application and assay.

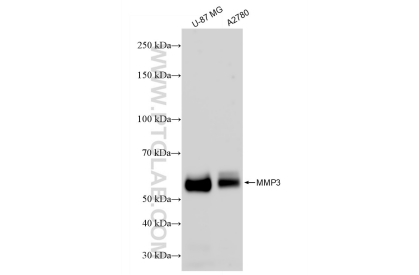
Storage

Storage:
Store at -80°C.
Storage Buffer:
100% PBS pH 7.3

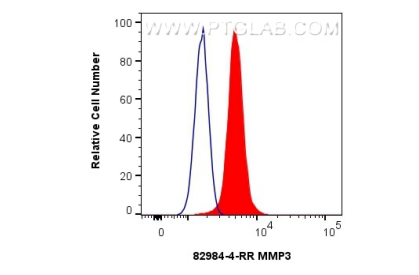
For technical support and original validation data for this product please contact:
T: 1 (888) 4PTGLAB (1-888-478-4522) (toll free in USA), or 1(312) 455-8498 (outside USA)
E: proteintech@ptglab.com
W: ptglab.com

This product is exclusively available under Proteintech Group brand and is not available to purchase from any other manufacturer.

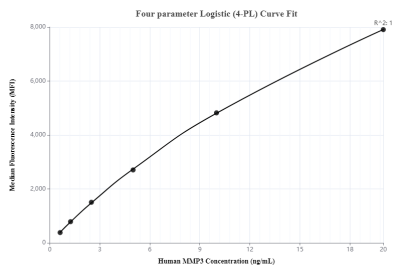
Selected Validation Data



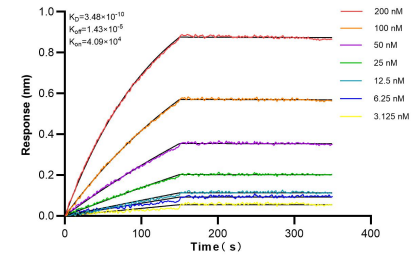
Various lysates were subjected to SDS PAGE followed by western blot with 82984-4-RR (MMP3 antibody) at dilution of 1:10000 incubated at room temperature for 1.5 hours. This data was developed using the same antibody clone with 82984-4-PBS in a different storage buffer formulation.



1x10⁶ HepG2 cells were intracellularly stained with 0.4 ug MMP3 Recombinant antibody (82984-4-RR, Clone:230535G8) and CoraLite®488-Conjugated AffiniPure Goat Anti-Rabbit IgG(H+L) (SA00013-2)(red), or 0.4 ug Isotype Control (blue). Cells were fixed with 4% PFA and permeabilized with Flow Cytometry Perm Buffer (PF00011-C). This data was developed using the same antibody clone with 82984-4-PBS in a different storage buffer formulation.



Cytometric bead array standard curve ofMP00083-3, MMP3 Recombinant Matched Antibody Pair, PBS Only. Capture antibody: 82984-1-PBS. Detection antibody: 82984-4-PBS. Standard: Eg0382. Range: 0.625-20 ng/mL.



Biolayer interferometry (BLI) kinetic assays of 82984-4-RR against Human MMP3 were performed. The affinity constant is 0.348 nM.