

For Research Use Only

# AKAP3 Recombinant antibody

Catalog Number: 82986-1-RR



## Basic Information

Catalog Number:	82986-1-RR	GenBank Accession Number:	BC047535	Purification Method:	Protein A purification
Size:	100ul , Concentration: 1000 ug/ml by Nanodrop;	GeneID (NCBI):	10566	CloneNo.:	230278C3
Source:	Rabbit	UNIPROT ID:	O75969	Recommended Dilutions:	WB 1:5000-1:50000
Isotype:	IgG	Full Name:	A kinase (PRKA) anchor protein 3		
Immunogen Catalog Number:	AG33655	Calculated MW:	95 kDa		
		Observed MW:	100 kDa		

## Applications

Tested Applications:	WB, ELISA	Positive Controls:	WB : mouse testis tissue, rat testis tissue
Species Specificity:	human, mouse, rat		

## Background Information

AKAP3 is a member of A-kinase anchoring proteins (AKAPs), a family of functionally related proteins that target protein kinase A to discrete locations within the cell. AKAP3 is reported to participate in protein-protein interactions with the R-subunit of the protein kinase A as well as sperm-associated proteins. AKAP3 is expressed in spermatozoa and localized to the acrosomal region of the sperm head as well as the length of the principal piece. It may function as a regulator of motility, capacitation, and the acrosome reaction.

## Storage

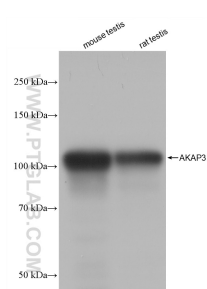
**Storage:**  
Store at -20°C. Stable for one year after shipment.  
**Storage Buffer:**  
PBS with 0.02% sodium azide and 50% glycerol pH 7.3.  
Aliquoting is unnecessary for -20°C storage

\*\*\* 20ul sizes contain 0.1% BSA

For technical support and original validation data for this product please contact:  
T: 1 (888) 4PTGLAB (1-888-478-4522) (toll free in USA), or 1(312) 455-8498 (outside USA)  
E: [proteintech@ptglab.com](mailto:proteintech@ptglab.com)  
W: [ptglab.com](http://ptglab.com)

This product is exclusively available under Proteintech Group brand and is not available to purchase from any other manufacturer.

## Selected Validation Data



Various lysates were subjected to SDS PAGE followed by western blot with 82986-1-RR (AKAP3 antibody) at dilution of 1:20000 incubated at room temperature for 1.5 hours.