

For Research Use Only

# LAMP5 Recombinant antibody, PBS Only (Detector)

Catalog Number: 82992-2-PBS



## Basic Information

<b>Catalog Number:</b> 82992-2-PBS	<b>GenBank Accession Number:</b> BC050727	<b>Purification Method:</b> Protein A purification
<b>Size:</b> 100ug , Concentration: 1mg/ml by Nanodrop;	<b>GeneID (NCBI):</b> 24141	<b>CloneNo.:</b> 230102F12
<b>Source:</b> Rabbit	<b>UNIPROT ID:</b> Q9UJQ1	
<b>Isotype:</b> IgG	<b>Full Name:</b> chromosome 20 open reading frame 103	
<b>Immunogen Catalog Number:</b> AG33894	<b>Observed MW:</b> 31-35 kDa	

## Applications

**Tested Applications:**  
WB, IF/ICC, FC (Intra), Cytometric bead array, Indirect ELISA

**Species Specificity:**  
human, mouse

## Product Information

82992-2-PBS targets LAMP5 as part of a matched antibody pair:

MP00069-3: 82992-4-PBS capture and 82992-2-PBS detection (validated in Cytometric bead array)

Unconjugated rabbit recombinant monoclonal antibody in PBS only (BSA and azide free) storage buffer at a concentration of 1 mg/mL, ready for conjugation. Created using Proteintech's proprietary in-house recombinant technology. Recombinant production enables unrivalled batch-to-batch consistency, easy scale-up, and future security of supply.

This conjugation ready format makes antibodies ideal for use in many applications including: ELISAs, multiplex assays requiring matched pairs, mass cytometry, and multiplex imaging applications. Antibody use should be optimized by the end user for each application and assay.

## Background Information

LAMP5 (Lysosome-associated membrane glycoprotein 5) is also named as BAD-LAMP and C20orf103. BAD-LAMP is a novel biomarker of nonactivated human plasmacytoid dendritic cells (PMID: 21642595). LAMP5 may be one of the key genes in the development of Multiple myeloma (MM) as well as its recurrence (PMID: 37033323). LAMP5 is a mammalian ortholog of the Caenorhabditis elegans protein, UNC-46, which functions as a sorting factor to localize the vesicular GABA transporter UNC-47 to synaptic vesicles (PMID: 30867010). It was localized exclusively in inhibitory synaptic terminals (PMID: 30867010).

## Storage

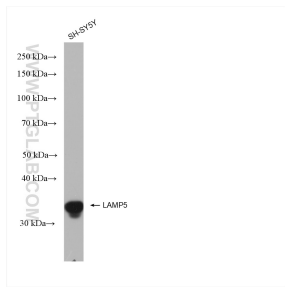
**Storage:**  
Store at -80°C.

**Storage Buffer:**  
100% PBS pH 7.3

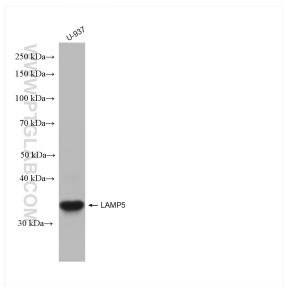
For technical support and original validation data for this product please contact:  
T: 1 (888) 4PTGLAB (1-888-478-4522) (toll free in USA), or 1(312) 455-8498 (outside USA)  
E: [proteintech@ptglab.com](mailto:proteintech@ptglab.com)  
W: [ptglab.com](http://ptglab.com)

This product is exclusively available under Proteintech Group brand and is not available to purchase from any other manufacturer.

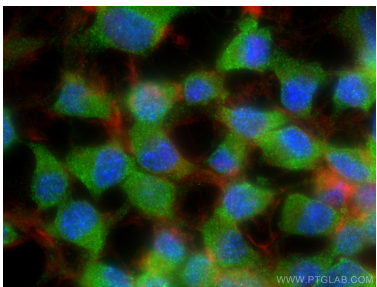
## Selected Validation Data



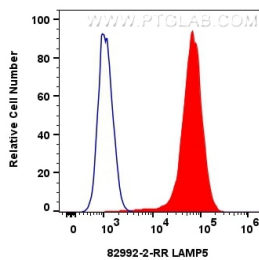
Various lysates were subjected to SDS PAGE followed by western blot with 82992-2-RR (LAMP5 antibody) at dilution of 1:10000 incubated at room temperature for 1.5 hours. This data was developed using the same antibody clone with 82992-2-PBS in a different storage buffer formulation.



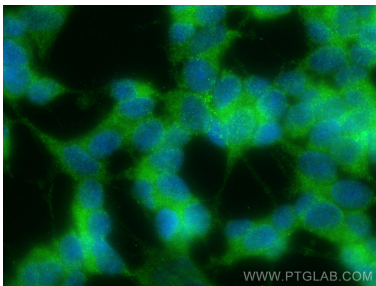
Various lysates were subjected to SDS PAGE followed by western blot with 82992-2-RR (LAMP5 antibody) at dilution of 1:10000 incubated at room temperature for 1.5 hours. This data was developed using the same antibody clone with 82992-2-PBS in a different storage buffer formulation.



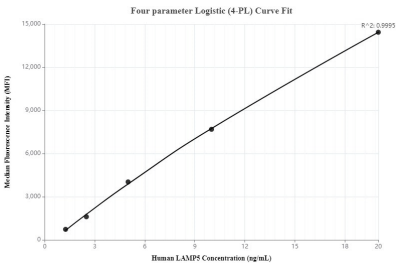
Immunofluorescent analysis of (4% PFA) fixed Neuro-2a cells using LAMP5 antibody (82992-2-RR, Clone: 230102F12 ) at dilution of 1:1000 and CoraLite®488-Conjugated AffiniPure Goat Anti-Rabbit IgG(H+L) (SA00013-2), CL594-Phalloidin (red). This data was developed using the same antibody clone with 82992-2-PBS in a different storage buffer formulation.



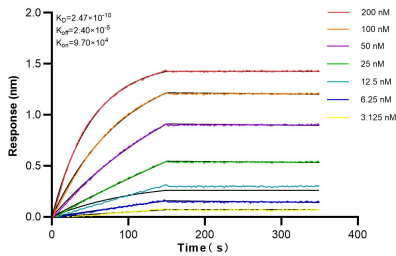
1x10<sup>6</sup> SH-SY5Y cells were intracellularly stained with 0.25 ug LAMP5 Recombinant antibody (82992-2-RR, Clone:230102F12) and CoraLite®488-Conjugated Goat Anti-Rabbit IgG(H+L) (SA00013-2) (red). Cells were fixed with 4% PFA and permeabilized with Flow Cytometry Perm Buffer (PF00011-C). This data was developed using the same antibody clone with 82992-2-PBS in a different storage buffer formulation.



Immunofluorescent analysis of (-20°C Ethanol) fixed SH-SY5Y cells using LAMP5 antibody (82992-2-RR, Clone: 230102F12 ) at dilution of 1:500 and CoraLite®488-Conjugated Goat Anti-Rabbit IgG(H+L) (SA00013-2). This data was developed using the same antibody clone with 82992-2-PBS in a different storage buffer formulation.



Cytometric bead array standard curve of MP00069-3, LAMP5 Recombinant Matched Antibody Pair, PBS Only. Capture antibody: 82992-4-PBS. Detection antibody: 82992-2-PBS. Standard: Ag33894. Range: 1.25-20 ng/mL.



Biolayer interferometry (BLI) kinetic assays of 82992-2-RR against Human LAMP5 were performed. The affinity constant is 0.247 nM.