

For Research Use Only

# LAMP5 Recombinant antibody

Catalog Number: 82992-2-RR



## Basic Information

<b>Catalog Number:</b> 82992-2-RR	<b>GenBank Accession Number:</b> BC050727	<b>Purification Method:</b> Protein A purification
<b>Size:</b> 100ul , Concentration: 1000 ug/ml by Nanodrop;	<b>GeneID (NCBI):</b> 24141	<b>CloneNo.:</b> 230102F12
<b>Source:</b> Rabbit	<b>UNIPROT ID:</b> Q9UJQ1	<b>Recommended Dilutions:</b> WB 1:5000-1:50000 IF/ICC 1:500-1:2000
<b>Isotype:</b> IgG	<b>Full Name:</b> chromosome 20 open reading frame 103	
<b>Immunogen Catalog Number:</b> AG33894	<b>Observed MW:</b> 31-35 kDa	

## Applications

<b>Tested Applications:</b> WB, IF/ICC, FC (Intra), ELISA	<b>Positive Controls:</b> WB : SH-SY5Y cells, U-937 cells IF/ICC : Neuro-2a cells, SH-SY5Y cells
<b>Species Specificity:</b> human, mouse	

## Background Information

LAMP5 (Lysosome-associated membrane glycoprotein 5) is also named as BAD-LAMP and C20orf103. BAD-LAMP is a novel biomarker of nonactivated human plasmacytoid dendritic cells (PMID: 21642595). LAMP5 may be one of the key genes in the development of Multiple myeloma (MM) as well as its recurrence (PMID: 37033323). LAMP5 is a mammalian ortholog of the Caenorhabditis elegans protein, UNC-46, which functions as a sorting factor to localize the vesicular GABA transporter UNC-47 to synaptic vesicles (PMID: 30867010). It was localized exclusively in inhibitory synaptic terminals (PMID: 30867010).

## Storage

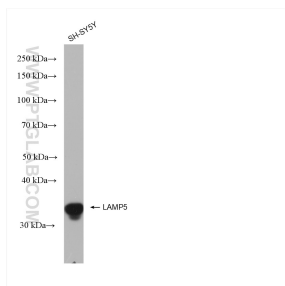
**Storage:**  
Store at -20°C. Stable for one year after shipment.  
**Storage Buffer:**  
PBS with 0.02% sodium azide and 50% glycerol pH 7.3.  
**Aliquoting is unnecessary for -20°C storage**

\*\*\* 20ul sizes contain 0.1% BSA

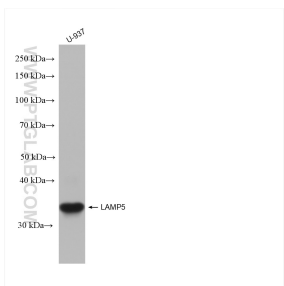
For technical support and original validation data for this product please contact:  
T: 1 (888) 4PTGLAB (1-888-478-4522) (toll free in USA), or 1(312) 455-8498 (outside USA)  
E: [proteintech@ptglab.com](mailto:proteintech@ptglab.com)  
W: [ptglab.com](http://ptglab.com)

This product is exclusively available under Proteintech Group brand and is not available to purchase from any other manufacturer.

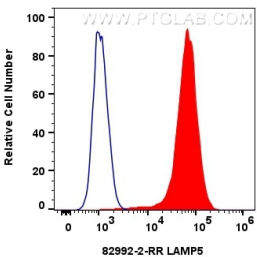
## Selected Validation Data



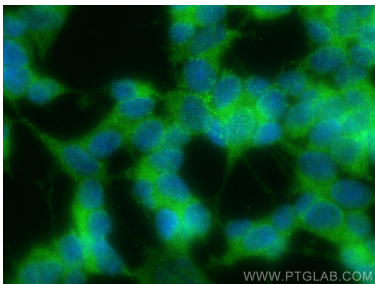
Various lysates were subjected to SDS PAGE followed by western blot with 82992-2-RR (LAMP5 antibody) at dilution of 1:10000 incubated at room temperature for 1.5 hours.



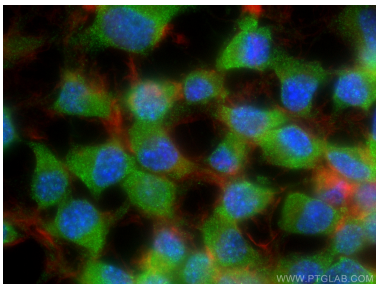
Various lysates were subjected to SDS PAGE followed by western blot with 82992-2-RR (LAMP5 antibody) at dilution of 1:10000 incubated at room temperature for 1.5 hours.



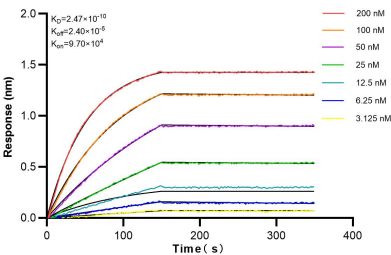
1x10<sup>6</sup> SH-SY5Y cells were intracellularly stained with 0.25 ug LAMP5 Recombinant antibody (82992-2-RR, Clone:230102F12) and CoraLite®488-Conjugated Goat Anti-Rabbit IgG(H+L) (SA00013-2) (red). Cells were fixed with 4% PFA and permeabilized with Flow Cytometry Perm Buffer (PF00011-C).



Immunofluorescent analysis of (-20°C Ethanol) fixed SH-SY5Y cells using LAMP5 antibody (82992-2-RR, Clone: 230102F12 ) at dilution of 1:500 and CoraLite®488-Conjugated Goat Anti-Rabbit IgG(H+L) (SA00013-2).



Immunofluorescent analysis of (4% PFA) fixed Neuro-2a cells using LAMP5 antibody (82992-2-RR, Clone: 230102F12 ) at dilution of 1:1000 and CoraLite®488-Conjugated AffiniPure Goat Anti-Rabbit IgG(H+L) (SA00013-2), CL594-Phalloidin (red).



Biolayer interferometry (BLI) kinetic assays of 82992-2-RR against Human LAMP5 were performed. The affinity constant is 0.247 nM.