

UBN1-Specific Recombinant antibody, PBS Only (Detector)

Catalog Number: 83001-1-PBS

Basic Information

Catalog Number: 83001-1-PBS	GenBank Accession Number: NM_016936	Purification Method: Protein A purification
Size: 100ug , Concentration: 1mg/ml by Nanodrop;	GeneID (NCBI): 29855	CloneNo.: 240014A8
Source: Rabbit	UNIPROT ID: Q9NPG3	
Isotype: IgG	Full Name: ubinnuclein 1	
	Calculated MW: 121 kDa	

Applications

Tested Applications:
Indirect ELISA, Cytometric bead array

Species Specificity:
Human

Product Information

83001-1-PBS targets UBN1-Specific as part of a matched antibody pair:

MP00095-1: 83001-2-PBS capture and 83001-1-PBS detection (validated in Cytometric bead array)

MP00095-2: 83001-4-PBS capture and 83001-1-PBS detection (validated in Cytometric bead array)

MP00095-3: 83001-3-PBS capture and 83001-1-PBS detection (validated in Cytometric bead array)

Unconjugated rabbit recombinant monoclonal antibody in PBS only (BSA and azide free) storage buffer at a concentration of 1 mg/mL, ready for conjugation. Created using Proteintech's proprietary in-house recombinant technology. Recombinant production enables unrivalled batch-to-batch consistency, easy scale-up, and future security of supply.

This conjugation ready format makes antibodies ideal for use in many applications including: ELISAs, multiplex assays requiring matched pairs, mass cytometry, and multiplex imaging applications. Antibody use should be optimized by the end user for each application and assay.

Storage

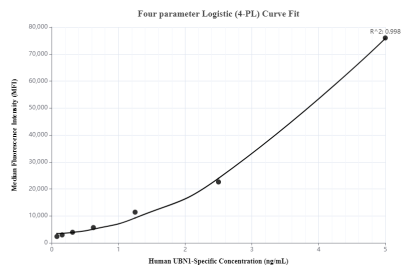
Storage:
Store at -80°C.

Storage Buffer:
100% PBS pH 7.3

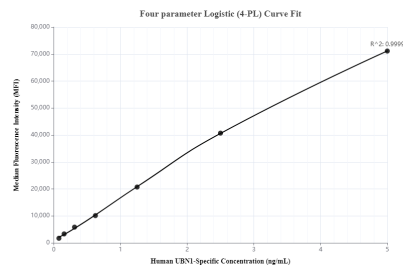
For technical support and original validation data for this product please contact:
T: 1 (888) 4PTGLAB (1-888-478-4522) (toll free in USA), or 1(312) 455-8498 (outside USA)
E: proteintech@ptglab.com
W: ptglab.com

This product is exclusively available under Proteintech Group brand and is not available to purchase from any other manufacturer.

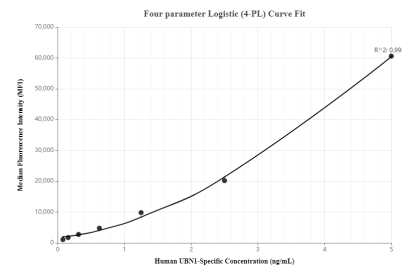
Selected Validation Data



Cytometric bead array standard curve ofMP00095-1, UBN1-Specific Recombinant Matched Antibody Pair, PBS Only. Capture antibody: 83001-2-PBS. Detection antibody: 83001-1-PBS. Standard: SY00809. Range: 0.078-5 ng/mL



Cytometric bead array standard curve ofMP00095-2, UBN1-Specific Recombinant Matched Antibody Pair, PBS Only. Capture antibody: 83001-4-PBS. Detection antibody: 83001-1-PBS. Standard: SY00809. Range: 0.078-5 ng/mL



Cytometric bead array standard curve ofMP00095-3, UBN1-Specific Recombinant Matched Antibody Pair, PBS Only. Capture antibody: 83001-3-PBS. Detection antibody: 83001-1-PBS. Standard: SY00809. Range: 0.078-5 ng/mL