

For Research Use Only

LAMA2 Recombinant antibody, PBS Only (Detector)

Catalog Number: 83007-2-PBS



Basic Information

Catalog Number: 83007-2-PBS	GenBank Accession Number: NM_000426	Purification Method: Protein A purification
Size: 100ug , Concentration: 1mg/ml by Nanodrop;	GeneID (NCBI): 3908	CloneNo.: 230541D5
Source: Rabbit	UNIPROT ID: P24043	
Isotype: IgG	Full Name: laminin, alpha 2	
Immunogen Catalog Number: AG34494	Calculated MW: 344 kDa	

Applications

Tested Applications:
WB, Cytometric bead array, Indirect ELISA

Species Specificity:
human

Product Information

83007-2-PBS targets LAMA2 as part of a matched antibody pair:

MP00041-1: 83007-3-PBS capture and 83007-2-PBS detection (validated in Cytometric bead array)

MP00041-2: 83007-1-PBS capture and 83007-2-PBS detection (validated in Cytometric bead array)

Unconjugated rabbit recombinant monoclonal antibody in PBS only (BSA and azide free) storage buffer at a concentration of 1 mg/mL, ready for conjugation. Created using Proteintech's proprietary in-house recombinant technology. Recombinant production enables unrivalled batch-to-batch consistency, easy scale-up, and future security of supply.

This conjugation ready format makes antibodies ideal for use in many applications including: ELISAs, multiplex assays requiring matched pairs, mass cytometry, and multiplex imaging applications. Antibody use should be optimized by the end user for each application and assay.

Storage

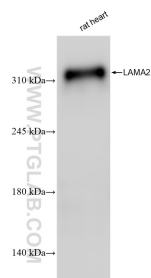
Storage:
Store at -80°C.

Storage Buffer:
100% PBS pH 7.3

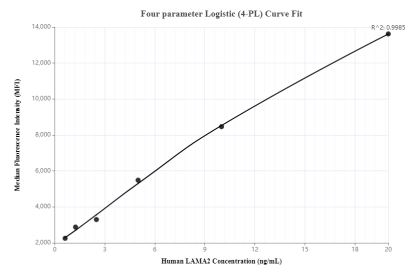
For technical support and original validation data for this product please contact:
T: 1 (888) 4PTGLAB (1-888-478-4522) (toll free in USA), or 1(312) 455-8498 (outside USA)
E: proteintech@ptglab.com
W: ptglab.com

This product is exclusively available under Proteintech Group brand and is not available to purchase from any other manufacturer.

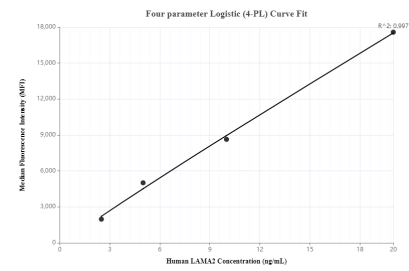
Selected Validation Data



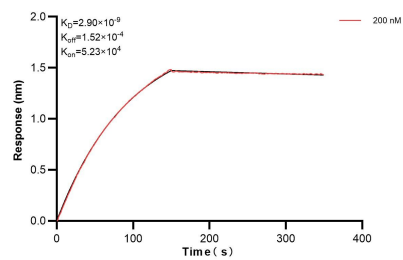
Rat heart tissue were subjected to SDS PAGE followed by western blot with 83007-2-RR (LAMA2 antibody) at dilution of 1:1000 incubated at room temperature for 1.5 hours. This data was developed using the same antibody clone with 83007-2-PBS in a different storage buffer formulation.



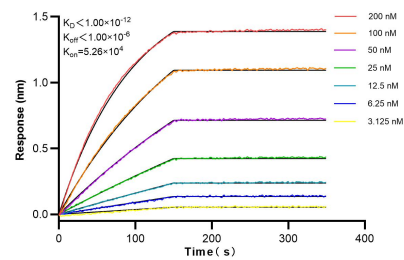
Cytometric bead array standard curve of MP00041-1, LAMA2 Recombinant Matched Antibody Pair, PBS Only. Capture antibody: 83007-3-PBS. Detection antibody: 83007-2-PBS. Standard: Ag34494. Range: 0.625-20 ng/mL.



Cytometric bead array standard curve of MP00041-2, LAMA2 Recombinant Matched Antibody Pair, PBS Only. Capture antibody: 83007-1-PBS. Detection antibody: 83007-2-PBS. Standard: Ag34494. Range: 2.5-20 ng/mL.



Biolayer interferometry (BLI) kinetic assay of 83007-2-PBS against Human LAMA2 was performed. The affinity constant is below 1 pM.



Biolayer interferometry (BLI) kinetic assays of 83007-2-RR against Human LAMA2 were performed. The affinity constant is below 1 pM.