

For Research Use Only

LAMA2 Recombinant antibody

Catalog Number: 83007-2-RR



Basic Information

Catalog Number: 83007-2-RR	GenBank Accession Number: NM_000426	Purification Method: Protein A purification
Size: 100ul , Concentration: 1000 ug/ml by Nanodrop;	GeneID (NCBI): 3908	CloneNo.: 230541D5
Source: Rabbit	UNIPROT ID: P24043	Recommended Dilutions: WB 1:500-1:2000
Isotype: IgG	Full Name: laminin, alpha 2	
Immunogen Catalog Number: AG34494	Calculated MW: 344 kDa	
	Observed MW: 344 kDa	

Applications

Tested Applications: WB, ELISA	Positive Controls: WB : rat heart tissue,
Species Specificity: human	

Background Information

The laminin subunit alpha 2 (LAMA2) gene encodes an alpha 2 chain, which constitutes one of the subunits of laminin 2 (merosin) and laminin 4 (s-merosin). Basal laminae are structural components of the extracellular matrix that influence cell proliferation and differentiation, and laminin subunit alpha 2 (LAMA2) is the major component of the basal laminae- α subunit of laminin. (PMID: 30728939)

Storage

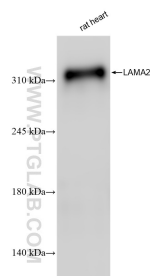
Storage:
Store at -20°C. Stable for one year after shipment.
Storage Buffer:
PBS with 0.02% sodium azide and 50% glycerol pH 7.3.
Aliquoting is unnecessary for -20°C storage

*** 20ul sizes contain 0.1% BSA

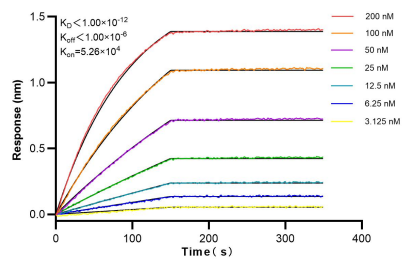
For technical support and original validation data for this product please contact:
T: 1 (888) 4PTGLAB (1-888-478-4522) (toll free in USA), or 1(312) 455-8498 (outside USA)
E: proteintech@ptglab.com
W: ptglab.com

This product is exclusively available under Proteintech Group brand and is not available to purchase from any other manufacturer.

Selected Validation Data



Rat heart tissue were subjected to SDS PAGE followed by western blot with 83007-2-RR (LAMA2 antibody) at dilution of 1:1000 incubated at room temperature for 1.5 hours.



Biolayer interferometry (BLI) kinetic assays of 83007-2-RR against Human LAMA2 were performed. The affinity constant is below 1 pM.