

For Research Use Only

# golgin 97 Recombinant antibody

Catalog Number: 83009-4-RR



## Basic Information

<b>Catalog Number:</b> 83009-4-RR	<b>GenBank Accession Number:</b> BC032853	<b>Purification Method:</b> Protein A purification
<b>Size:</b> 100ul , Concentration: 1000 ug/ml by Nanodrop;	<b>GeneID (NCBI):</b> 2800	<b>CloneNo.:</b> 230523A5
<b>Source:</b> Rabbit	<b>UNIPROT ID:</b> Q92805	<b>Recommended Dilutions:</b> WB 1:5000-1:20000 IHC 1:250-1:1000 IF/ICC 1:125-1:500
<b>Isotype:</b> IgG	<b>Full Name:</b> golgi autoantigen, golgin subfamily a, 1	
<b>Immunogen Catalog Number:</b> AG3335	<b>Calculated MW:</b> 767 aa, 88 kDa	
	<b>Observed MW:</b> 97 kDa	

## Applications

<b>Tested Applications:</b> WB, IHC, IF/ICC, FC (Intra), ELISA	<b>Positive Controls:</b>
<b>Species Specificity:</b> human	<b>WB :</b> HeLa cells, A549 cells, LNCaP cells, MCF-7 cells, SMMC-7721 cells
<b>Note-IHC: suggested antigen retrieval with TE buffer pH 9.0; (*) Alternatively, antigen retrieval may be performed with citrate buffer pH 6.0</b>	<b>IHC :</b> human ovary cancer tissue,
	<b>IF/ICC :</b> HepG2 cells,

## Background Information

Golgin subfamily A member 1 is a protein that in humans is encoded by the GOLGA1 gene. GOLGA1 has been shown to interact with ARL1. GOLGA1 is associated with Sjogren's syndrome. IF result shows strong Golgi staining.

## Storage

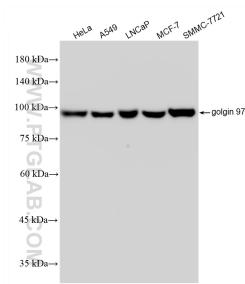
**Storage:**  
Store at -20°C. Stable for one year after shipment.  
**Storage Buffer:**  
PBS with 0.02% sodium azide and 50% glycerol pH 7.3.  
**Aliquoting is unnecessary for -20°C storage**

\*\*\* 20ul sizes contain 0.1% BSA

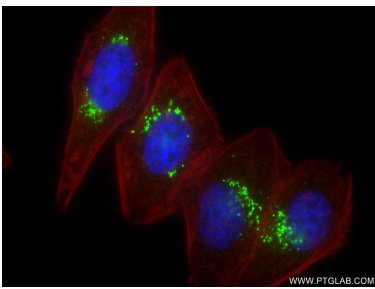
For technical support and original validation data for this product please contact:  
T: 1 (888) 4PTGLAB (1-888-478-4522) (toll free in USA), or 1(312) 455-8498 (outside USA)  
E: [proteintech@ptglab.com](mailto:proteintech@ptglab.com)  
W: [ptglab.com](http://ptglab.com)

This product is exclusively available under Proteintech Group brand and is not available to purchase from any other manufacturer.

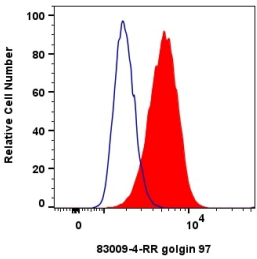
Selected Validation Data



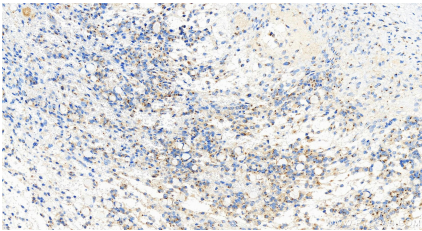
Various lysates were subjected to SDS PAGE followed by western blot with 83009-4-RR (golgin 97 antibody) at dilution of 1:10000 incubated at room temperature for 1.5 hours.



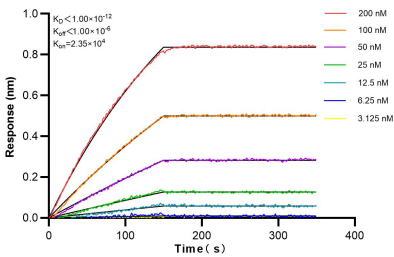
Immunofluorescent analysis of (4% PFA) fixed HepG2 cells using golgin 97 antibody (83009-4-RR, Clone: 230523A5) at dilution of 1:250 and CoraLite®488-Conjugated AffiniPure Goat Anti-Rabbit IgG(H+L) (SA00013-2), CL594-Phalloidin (red).



1x10<sup>6</sup> HepG2 cells were intracellularly stained with 0.25 ug golgin 97 Recombinant antibody (83009-4-RR, Clone:230523A5) and CoraLite®488-Conjugated Goat Anti-Rabbit IgG(H+L) (SA00013-2) (red), or 0.25 ug Control Antibody (blue). Cells were fixed with 4% PFA and permeabilized with Flow Cytometry Perm Buffer (PF00011-C).



Immunohistochemical analysis of paraffin-embedded human ovary cancer tissue slide using 83009-4-RR (golgin 97 antibody) at dilution of 1:500 (under 20x lens). Heat mediated antigen retrieval with Tris-EDTA buffer (pH 9.0).



Biolayer interferometry (BLI) kinetic assays of 83009-4-RR against Human golgin 97 were performed. The affinity constant is below 1 pM.