

For Research Use Only

COL6A3 Recombinant antibody, PBS Only (Capture/Detector)

Catalog Number: 83010-4-PBS



Basic Information

Catalog Number: 83010-4-PBS	GenBank Accession Number: NM_004369	Purification Method: Protein A purification
Size: 100ug , Concentration: 1 mg/ml by Nanodrop;	GeneID (NCBI): 1293	CloneNo.: 230540E3
Source: Rabbit	UNIPROT ID: P12111	
Isotype: IgG	Full Name: collagen, type VI, alpha 3	
Immunogen Catalog Number: AG34752	Calculated MW: 344 kDa	

Applications

Tested Applications:
Cytometric bead array, Sandwich ELISA, Indirect ELISA, Sample test

Species Specificity:
human

Product Information

83010-4-PBS targets COL6A3 as part of a matched antibody pair:

MP00027-1: 83010-3-PBS capture and 83010-4-PBS detection (validated in Cytometric bead array)

MP00027-2: 83010-2-PBS capture and 83010-4-PBS detection (validated in Cytometric bead array)

MP00027-3: 83010-1-PBS capture and 83010-4-PBS detection (validated in Cytometric bead array)

MP00027-4: 83010-4-PBS capture and 83010-5-PBS detection (validated in Sandwich ELISA)

Unconjugated rabbit recombinant monoclonal antibody in PBS only (BSA and azide free) storage buffer at a concentration of 1 mg/mL, ready for conjugation. Created using Proteintech's proprietary in-house recombinant technology. Recombinant production enables unrivalled batch-to-batch consistency, easy scale-up, and future security of supply.

This conjugation ready format makes antibodies ideal for use in many applications including: ELISAs, multiplex assays requiring matched pairs, mass cytometry, and multiplex imaging applications. Antibody use should be optimized by the end user for each application and assay.

Storage

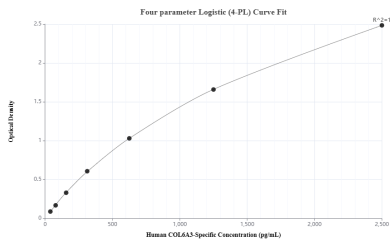
Storage:
Store at -80°C.

Storage Buffer:
PBS only

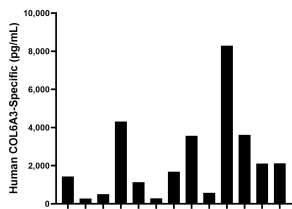
For technical support and original validation data for this product please contact:
T: 1 (888) 4PTGLAB (1-888-478-4522) (toll free in USA), or 1(312) 455-8498 (outside USA)
E: proteintech@ptglab.com
W: ptglab.com

This product is exclusively available under Proteintech Group brand and is not available to purchase from any other manufacturer.

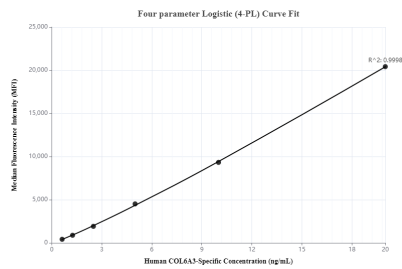
Selected Validation Data



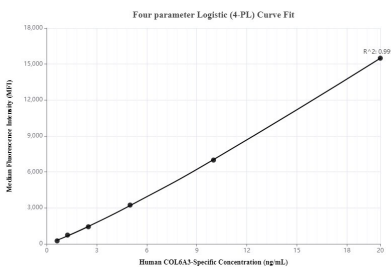
Sandwich ELISA standard curve of MP00027-4, Human COL6A3-Specific Monoclonal Matched Antibody Pair - PBS only. 83010-4-PBS was coated to a plate as the capture antibody and incubated with serial dilutions of standard Ag34752. 83010-5-PBS was HRP conjugated as the detection antibody. Range: 39.06-2500 pg/mL



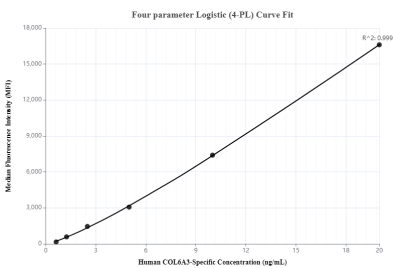
Serum of thirteen individual healthy human donors were measured. The human COL6A3-Specific concentration of detected samples was determined to be 2,299.8 pg/mL with a range of 274.4 - 8,287.33 pg/mL



Cytometric bead array standard curve of MP00027-1, COL6A3-Specific Recombinant Matched Antibody Pair, PBS Only. Capture antibody: 83010-3-PBS. Detection antibody: 83010-4-PBS. Standard: Ag34752. Range: 0.625-20 ng/mL



Cytometric bead array standard curve of MP00027-2, COL6A3-Specific Recombinant Matched Antibody Pair, PBS Only. Capture antibody: 83010-2-PBS. Detection antibody: 83010-4-PBS. Standard: Ag34752. Range: 0.625-20 ng/mL



Cytometric bead array standard curve of MP00027-3, COL6A3-Specific Recombinant Matched Antibody Pair, PBS Only. Capture antibody: 83010-1-PBS. Detection antibody: 83010-4-PBS. Standard: Ag34752. Range: 0.625-20 ng/mL