

For Research Use Only

GCSH Recombinant antibody

Catalog Number: 83012-5-RR



Basic Information

Catalog Number: 83012-5-RR	GenBank Accession Number: BC000790	Purification Method: Protein A purification
Size: 100ul , Concentration: 1000 ug/ml by Nanodrop;	GeneID (NCBI): 2653	CloneNo.: 230505A3
Source: Rabbit	UNIPROT ID: P23434	Recommended Dilutions: WB 1:5000-1:50000
Isotype: IgG	Full Name: glycine cleavage system protein H (aminomethyl carrier)	
Immunogen Catalog Number: AG10174	Calculated MW: 19 kDa	
	Observed MW: ~15 kDa	

Applications

Tested Applications: WB, ELISA	Positive Controls: WB : HEK-293 cells, MCF-7 cells, HeLa cells
Species Specificity: Human	

Background Information

GCSH(Glycine cleavage system H protein, mitochondrial) is a component of the glycine cleavage system loosely associated with the mitochondrial inner membrane and has lipoic acid as a prosthetic group. The full-length GCSH cDNA encodes a precursor protein of 173 amino acids and a mature protein of 125 amino acids. The lipoylation of H-protein occurs in mitochondria which probably contain an activated form of lipoic acid as well as other components required for the transfer of lipoic acid to the protein(PMID:2211640). Defects in GCSH are a cause of non-ketotic hyperglycinemia (NKH).

Storage

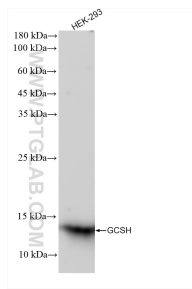
Storage:
Store at -20°C. Stable for one year after shipment.
Storage Buffer:
PBS with 0.02% sodium azide and 50% glycerol pH 7.3.
Aliquoting is unnecessary for -20°C storage

*** 20ul sizes contain 0.1% BSA

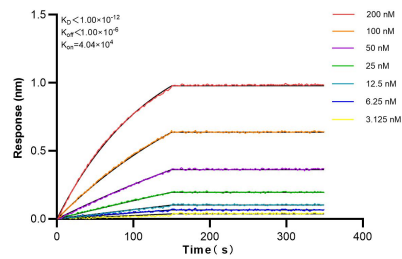
For technical support and original validation data for this product please contact:
T: 1 (888) 4PTGLAB (1-888-478-4522) (toll free in USA), or 1(312) 455-8498 (outside USA)
E: proteintech@ptglab.com
W: ptglab.com

This product is exclusively available under Proteintech Group brand and is not available to purchase from any other manufacturer.

Selected Validation Data



HEK-293 cells were subjected to SDS PAGE followed by western blot with 83012-5-RR (GCSH antibody) at dilution of 1:10000 incubated at room temperature for 1.5 hours.



Biolayer interferometry (BLI) kinetic assays of 83012-5-RR against Human GCSH were performed. The affinity constant is below 1 pM.