

For Research Use Only

# PPP1R15B Recombinant antibody, PBS Only (Capture)

Catalog Number: 83016-4-PBS



## Basic Information

<b>Catalog Number:</b> 83016-4-PBS	<b>GenBank Accession Number:</b> BC065280	<b>Purification Method:</b> Protein A purification
<b>Size:</b> 100ug , Concentration: 1 mg/ml by Nanodrop;	<b>GeneID (NCBI):</b> 84919	<b>CloneNo.:</b> 240052G6
<b>Source:</b> Rabbit	<b>UNIPROT ID:</b> Q5SWA1	
<b>Isotype:</b> IgG	<b>Full Name:</b> protein phosphatase 1, regulatory (inhibitor) subunit 15B	
<b>Immunogen Catalog Number:</b> AG6213	<b>Calculated MW:</b> 79 kDa	

## Applications

**Tested Applications:**  
Cytometric bead array, Indirect ELISA

**Species Specificity:**  
human

## Product Information

83016-4-PBS targets PPP1R15B as part of a matched antibody pair:

MP00002-1: 83016-4-PBS capture and 83016-1-PBS detection (validated in Cytometric bead array)

Unconjugated rabbit recombinant monoclonal antibody in PBS only (BSA and azide free) storage buffer at a concentration of 1 mg/mL, ready for conjugation. Created using Proteintech's proprietary in-house recombinant technology. Recombinant production enables unrivalled batch-to-batch consistency, easy scale-up, and future security of supply.

This conjugation ready format makes antibodies ideal for use in many applications including: ELISAs, multiplex assays requiring matched pairs, mass cytometry, and multiplex imaging applications. Antibody use should be optimized by the end user for each application and assay.

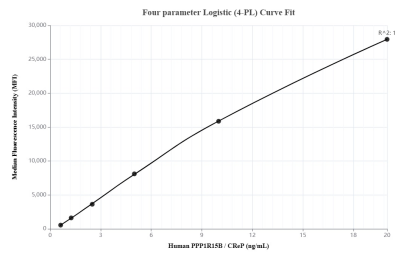
## Storage

**Storage:**  
Store at -80°C.  
**Storage Buffer:**  
100% PBS pH 7.3

For technical support and original validation data for this product please contact:  
T: 1 (888) 4PTGLAB (1-888-478-4522) (toll free in USA), or 1(312) 455-8498 (outside USA)  
E: proteintech@ptglab.com  
W: ptglab.com

This product is exclusively available under Proteintech Group brand and is not available to purchase from any other manufacturer.

# Selected Validation Data



Cytometric bead array standard curve of MP00002-1, PPP1R15B Recombinant Matched Antibody Pair, PBS Only. Capture antibody: 83016-4-PBS. Detection antibody: 83016-1-PBS. Standard: Ag6213. Range: 0.625-20 ng/mL.