

For Research Use Only

CTAGE5 Recombinant antibody, PBS Only (Capture)

Catalog Number: 83017-1-PBS



Basic Information

Catalog Number: 83017-1-PBS	GenBank Accession Number: NM_005930	Purification Method: Protein A purification
Size: 100ug , Concentration: 1mg/ml by Nanodrop;	GeneID (NCBI): 4253	CloneNo.: 230262E6
Source: Rabbit	UNIPROT ID: Q96PC5	
Isotype: IgG	Full Name: CTAGE family, member 5	
	Calculated MW: 92 kDa	

Applications

Tested Applications:
Indirect ELISA, Cytometric bead array

Species Specificity:
Human

Product Information

83017-1-PBS targets CTAGE5 as part of a matched antibody pair:

MP00052-1: 83017-1-PBS capture and 83017-3-PBS detection (validated in Cytometric bead array)

Unconjugated rabbit recombinant monoclonal antibody in PBS only (BSA and azide free) storage buffer at a concentration of 1 mg/mL, ready for conjugation. Created using Proteintech's proprietary in-house recombinant technology. Recombinant production enables unrivalled batch-to-batch consistency, easy scale-up, and future security of supply.

This conjugation ready format makes antibodies ideal for use in many applications including: ELISAs, multiplex assays requiring matched pairs, mass cytometry, and multiplex imaging applications. Antibody use should be optimized by the end user for each application and assay.

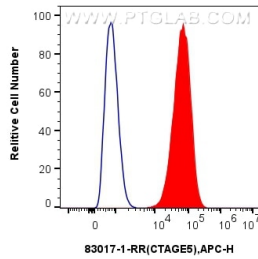
Storage

Storage:
Store at -80°C.
Storage Buffer:
100% PBS pH 7.3

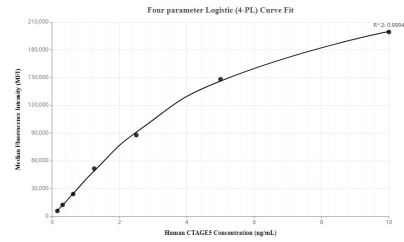
For technical support and original validation data for this product please contact:
T: 1 (888) 4PTGLAB (1-888-478-4522) (toll free in USA), or 1(312) 455-8498 (outside USA)
E: proteintech@ptglab.com
W: ptglab.com

This product is exclusively available under Proteintech Group brand and is not available to purchase from any other manufacturer.

Selected Validation Data



1x10⁶ HUVEC cells were intracellularly stained with 0.25 ug Anti-Human CTAGE5 (83017-1-RR, Clone:230262E6) and APC-Conjugated Goat Anti-Rabbit IgG(H+L)(red), or 0.25 ug Rabbit IgG control Rabbit PolyAb (30000-O-AP) (blue). Cells were fixed with 4% PFA and permeabilized with Flow Cytometry Perm Buffer (PF00011-C). This data was developed using the same antibody clone with 83017-1-PBS in a different storage buffer formulation.



Cytometric bead array standard curve ofMP00052-1, CTAGE5 Recombinant Matched Antibody Pair, PBS Only. Capture antibody: 83017-1-PBS. Detection antibody: 83017-3-PBS. Standard: SY01342. Range: 0.156-10 ng/mL.