

For Research Use Only

CTAGE5 Recombinant antibody

Catalog Number: 83017-1-RR



Basic Information

Catalog Number:	GenBank Accession Number:	Purification Method:
83017-1-RR	NM_005930	Protein A purification
Size:	GeneID (NCBI):	CloneNo.:
100ul , Concentration: 1000 µg/ml by Nanodrop;	4253	230262E6
Source:	UNIPROT ID:	
Rabbit	Q96PC5	
Isotype:	Full Name:	
IgG	CTAGE family, member 5	
	Calculated MW:	
	92 kDa	

Applications

Tested Applications:
ELISA, FC (Intra)

Species Specificity:
Human

Background Information

Cutaneous T cell lymphoma-associated antigen 5 (CTAGE5) is a member of the cTAGE family. CTAGE5 is a tumor-associated antigen and is overexpressed in various cancer cell lines. CTAGE5 consists of a signal anchor motif, a single transmembrane domain, two coiled-coil motifs, and a proline-rich domain (PRD) from the N-terminus. CTAGE5 interacts with TANGO1 through its second coil region to form a cargo receptor complex (PMID: 21525241).

Storage

Storage:
Store at -20°C. Stable for one year after shipment.

Storage Buffer:
PBS with 0.02% sodium azide and 50% glycerol pH 7.3.

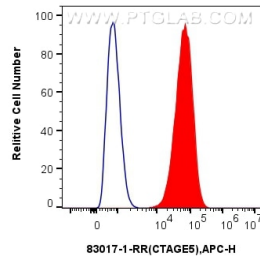
Aliquoting is unnecessary for -20°C storage

*** 20ul sizes contain 0.1%BSA

For technical support and original validation data for this product please contact:
T: 1 (888) 4PTGLAB (1-888-478-4522) (toll free in USA), or 1(312) 455-8498 (outside USA)
E: proteintech@ptglab.com
W: ptglab.com

This product is exclusively available under Proteintech Group brand and is not available to purchase from any other manufacturer.

Selected Validation Data



1×10^6 HUVEC cells were intracellularly stained with 0.25 μ g Anti-Human CTAGE5 (83017-1-RR, Clone:230262E6) and APC-Conjugated Goat Anti-Rabbit IgG(H+L)(red), or 0.25 μ g Rabbit IgG control Rabbit PolyAb (30000-0-AP) (blue). Cells were fixed with 4% PFA and permeabilized with Flow Cytometry Perm Buffer (PF00011-C).