

For Research Use Only

FDFT1 Recombinant antibody, PBS Only (Capture/Detector)

Catalog Number: 83020-2-PBS



Basic Information

Catalog Number: 83020-2-PBS	GenBank Accession Number: BC029641	Purification Method: Protein A purification
Size: 100ug , Concentration: 1 mg/ml by Nanodrop;	GeneID (NCBI): 2222	CloneNo.: 230362F3
Source: Rabbit	UNIPROT ID: P37268	
Isotype: IgG	Full Name: farnesyl-diphosphate farnesyltransferase 1	
Immunogen Catalog Number: AG3743	Calculated MW: 417 aa, 48 kDa	

Applications

Tested Applications:
IF/ICC, FC (Intra), Cytometric bead array, Sandwich
ELISA, Indirect ELISA, Sample test

Species Specificity:
human

Product Information

83020-2-PBS targets FDFT1 as part of a matched antibody pair:

MP00097-1: 83020-2-PBS capture and 83020-4-PBS detection (validated in Cytometric bead array, Sandwich ELISA)

MP00097-3: 83020-3-PBS capture and 83020-2-PBS detection (validated in Cytometric bead array)

Unconjugated rabbit recombinant monoclonal antibody in PBS only (BSA and azide free) storage buffer at a concentration of 1 mg/mL, ready for conjugation. Created using Proteintech's proprietary in-house recombinant technology. Recombinant production enables unrivalled batch-to-batch consistency, easy scale-up, and future security of supply.

This conjugation ready format makes antibodies ideal for use in many applications including: ELISAs, multiplex assays requiring matched pairs, mass cytometry, and multiplex imaging applications. Antibody use should be optimized by the end user for each application and assay.

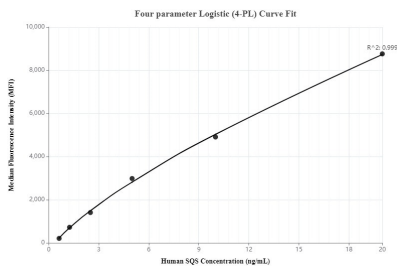
Storage

Storage:
Store at -80°C.
Storage Buffer:
100% PBS pH 7.3

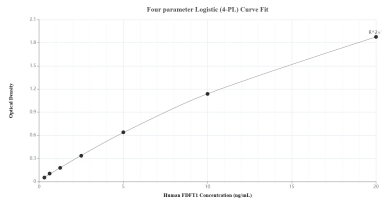
For technical support and original validation data for this product please contact:
T: 1 (888) 4PTGLAB (1-888-478-4522) (toll free in USA), or 1(312) 455-8498 (outside USA)
E: proteintech@ptglab.com
W: ptglab.com

This product is exclusively available under Proteintech Group brand and is not available to purchase from any other manufacturer.

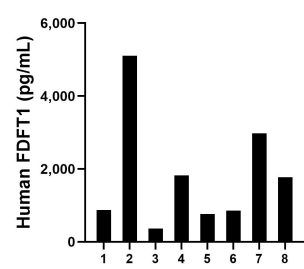
Selected Validation Data



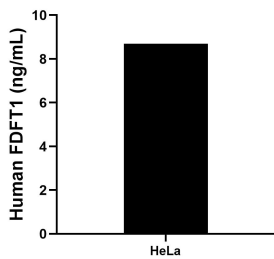
Cytometric bead array standard curve of MP00097-1, SQS/FDFT1 Recombinant Matched Antibody Pair, PBS Only. Capture antibody: 83020-2-PBS. Detection antibody: 83020-4-PBS. Standard: Ag3743. Range: 0.625-20 ng/mL



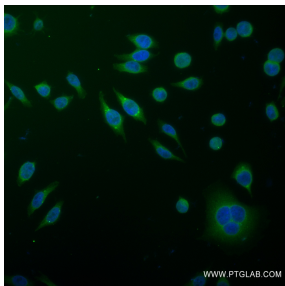
Sandwich ELISA standard curve of MP00097-1, Human FDFT1 Recombinant Matched Antibody Pair - PBS only. 83020-2-PBS was coated to a plate as the capture antibody and incubated with serial dilutions of standard Ag3743. 83020-4-PBS was HRP conjugated as the detection antibody. Range: 0.313-20 ng/mL



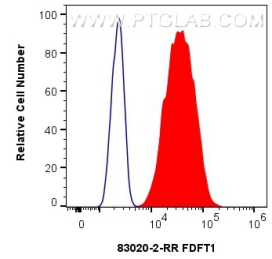
Serum of eight individual healthy human donors was measured. The FDFT1 concentration of detected samples was determined to be 1,817 pg/mL with a range of 368 - 5,103 pg/mL



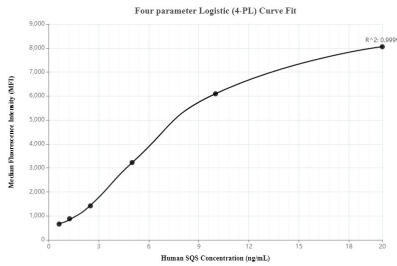
The mean FDFT1 concentration was determined to be 8.7 ng/mL in HeLa cell extract based on a 1.5 mg/mL extract load.



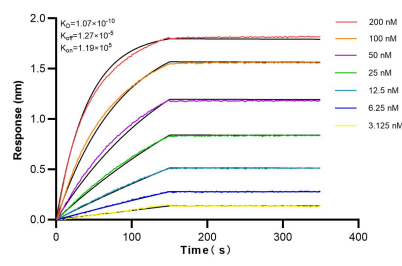
Immunofluorescent analysis of (4% PFA) fixed HepG2 cells using FDFT1 antibody (83020-2-RR, Clone: 230362F3) at dilution of 1:250 and CoraLite®488-Conjugated AffiniPure Goat Anti-Mouse IgG(H+L) (SA00013-1). This data was developed using the same antibody clone with 83020-2-PBS in a different storage buffer formulation.



1x10⁶ U2OS cells were intracellularly stained with 0.25 ug FDFT1 Recombinant antibody (83020-2-RR, Clone:230362F3) and CoraLite®488-Conjugated AffiniPure Goat Anti-Rabbit IgG(H+L) (SA00013-2)(red), or 0.25 ug Isotype Control (blue). Cells were fixed with 4% PFA and permeabilized with Flow Cytometry Perm Buffer (PF00011-C). This data was developed using the same antibody clone with 83020-2-PBS in a different storage buffer formulation.



Cytometric bead array standard curve of MP00097-3, SQS/FDFT1 Recombinant Matched Antibody Pair, PBS Only. Capture antibody: 83020-3-PBS. Detection antibody: 83020-2-PBS. Standard: Ag3743. Range: 0.625-20 ng/mL



Biolayer interferometry (BLI) kinetic assays of 83020-2-RR against Human FDFT1 were performed. The affinity constant is 0.107 nM.