

For Research Use Only

FDFT1 Recombinant antibody

Catalog Number: 83020-2-RR



Basic Information

Catalog Number: 83020-2-RR	GenBank Accession Number: BC029641	Purification Method: Protein A purification
Size: 100ul , Concentration: 1000 µg/ml by Nanodrop;	GeneID (NCBI): 2222	CloneNo.: 230362F3
Source: Rabbit	UNIPROT ID: P37268	Recommended Dilutions: IF 1:100-1:500
Isotype: IgG	Full Name: farnesyl-diphosphate farnesyltransferase 1	
Immunogen Catalog Number: AG3743	Calculated MW: 417 aa, 48 kDa	

Applications

Tested Applications: IF, ELISA	Positive Controls: IF : HepG2 cells,
Species Specificity: Human	

Background Information

SQS (Squalene synthase), also known as Farnesyl-diphosphate farnesyltransferase 1 (FDFT1) is a gene that encodes the membrane-associated enzyme squalene synthase, which is the first specific enzyme in cholesterol biosynthesis. FDFT1 is highly expressed in liver, lung, prostate, breast, ovary, bladder, cervix, thyroid, and esophageal cancers, while in colorectal, colon, testicular, uterine, pancreas, and kidney tumors, its expression is downregulated (PMID: 35093030). FDFT1 is a key downstream target of the fasting response and may be involved in CRC cell glucose metabolism (PMID: 32313017).

Storage

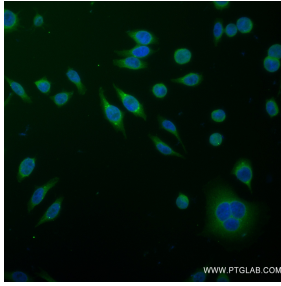
Storage:
Store at -20°C. Stable for one year after shipment.
Storage Buffer:
PBS with 0.02% sodium azide and 50% glycerol pH 7.3.
Aliquoting is unnecessary for -20°C storage

*** 20ul sizes contain 0.1% BSA

For technical support and original validation data for this product please contact:
T: 1 (888) 4PTGLAB (1-888-478-4522) (toll free in USA), or 1(312) 455-8498 (outside USA) E: proteintech@ptglab.com
W: ptglab.com

This product is exclusively available under Proteintech Group brand and is not available to purchase from any other manufacturer.

Selected Validation Data



Immunofluorescent analysis of (4% PFA) fixed HepG2 cells using FDFT1 antibody (83020-2-RR, Clone: 230362F3) at dilution of 1:250 and CoraLite®488-Conjugated AffiniPure Goat Anti-Mouse IgG(H+L) (SA00013-1).