

For Research Use Only

# Collagen Type XV Recombinant antibody, PBS Only (Capture/Detector)

Catalog Number: 83031-3-PBS



## Basic Information

<b>Catalog Number:</b> 83031-3-PBS	<b>GenBank Accession Number:</b> BC157094	<b>Purification Method:</b> Protein A purification
<b>Size:</b> 100ug, Concentration: 1mg/ml by Nanodrop;	<b>GeneID (NCBI):</b> 1306	<b>CloneNo.:</b> 230248F4
<b>Source:</b> Rabbit	<b>UNIPROT ID:</b> P39059	
<b>Isotype:</b> IgG	<b>Full Name:</b> collagen, type XV, alpha 1	
<b>Immunogen Catalog Number:</b> AG34644		

## Applications

**Tested Applications:**  
Sandwich ELISA, Indirect ELISA, Sample test

**Species Specificity:**  
human

## Product Information

83031-3-PBS targets Collagen Type XV as part of a matched antibody pair:

MP00133-2: 83031-4-PBS capture and 83031-3-PBS detection (validated in Cytometric bead array)

MP00133-4: 83031-3-PBS capture and 83031-1-PBS detection (validated in Sandwich ELISA)

Unconjugated rabbit recombinant monoclonal antibody in PBS only (BSA and azide free) storage buffer at a concentration of 1 mg/mL, ready for conjugation. Created using Proteintech's proprietary in-house recombinant technology. Recombinant production enables unrivalled batch-to-batch consistency, easy scale-up, and future security of supply.

This conjugation ready format makes antibodies ideal for use in many applications including: ELISAs, multiplex assays requiring matched pairs, mass cytometry, and multiplex imaging applications. Antibody use should be optimized by the end user for each application and assay.

## Storage

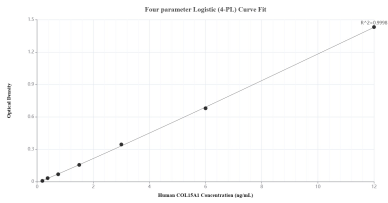
**Storage:**  
Store at -80°C.

**Storage Buffer:**  
PBS only, pH7.3

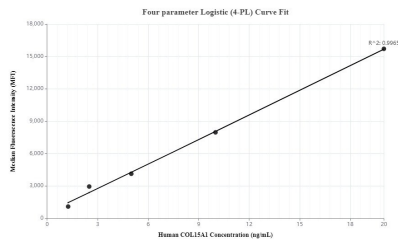
For technical support and original validation data for this product please contact:  
T: 1 (888) 4PTGLAB (1-888-478-4522) (toll free in USA), or 1(312) 455-8498 (outside USA)  
E: proteintech@ptglab.com  
W: ptglab.com

This product is exclusively available under Proteintech Group brand and is not available to purchase from any other manufacturer.

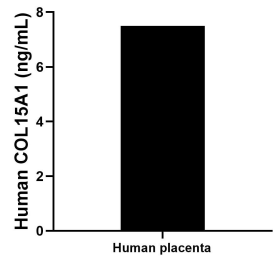
Selected Validation Data



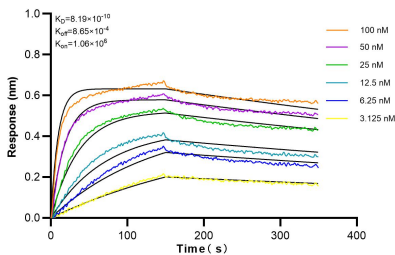
Sandwich ELISA standard curve of MP00133-4, Human COL15A1 Recombinant Matched Antibody Pair - PBS only. 83031-3-PBS was coated to a plate as the capture antibody and incubated with serial dilutions of standard Ag34644. 83031-1-PBS was HRP conjugated as the detection antibody. Range: 0.188-12 ng/mL



Sandwich ELISA standard curve of MP00133-2, COL15A1 Recombinant Matched Antibody Pair, PBS Only. Capture antibody: 83031-4-PBS. Detection antibody: 83031-3-PBS. Standard: Ag34644. Range: 1.25-20 ng/mL



The mean COL15A1 concentration was determined to be 7.50 ng/mL in human placenta extract based on a 2.40 mg/mL extract load.



Biolayer interferometry (BLI) kinetic assays of 83031-3-RR against Human COL15A1 were performed. The affinity constant is 0.819 nM.