

For Research Use Only

COL15A1 Recombinant antibody, PBS Only (Detector)

Catalog Number: 83031-5-PBS



Basic Information

Catalog Number: 83031-5-PBS	GenBank Accession Number: BC157094	Purification Method: Protein A purification
Size: 100ug , Concentration: 1mg/ml by Nanodrop;	GeneID (NCBI): 1306	CloneNo.: 230248G11
Source: Rabbit	UNIPROT ID: P39059	
Isotype: IgG	Full Name: collagen, type XV, alpha 1	
Immunogen Catalog Number: AG34644		

Applications

Tested Applications:
Sandwich ELISA, Indirect ELISA

Species Specificity:
human

Product Information

83031-5-PBS targets COL15A1 as part of a matched antibody pair:

MP00133-3: 83031-1-PBS capture and 83031-5-PBS detection (validated in Cytometric bead array)

Unconjugated rabbit recombinant monoclonal antibody in PBS only (BSA and azide free) storage buffer at a concentration of 1 mg/mL, ready for conjugation. Created using Proteintech's proprietary in-house recombinant technology. Recombinant production enables unrivalled batch-to-batch consistency, easy scale-up, and future security of supply.

This conjugation ready format makes antibodies ideal for use in many applications including: ELISAs, multiplex assays requiring matched pairs, mass cytometry, and multiplex imaging applications. Antibody use should be optimized by the end user for each application and assay.

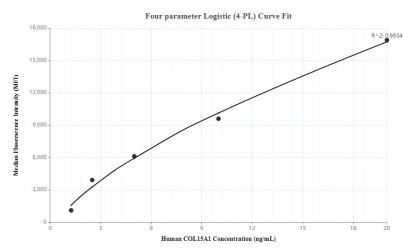
Storage

Storage:
Store at -80°C.
Storage Buffer:
100% PBS pH 7.3

For technical support and original validation data for this product please contact:
T: 1 (888) 4PTGLAB (1-888-478-4522) (toll free in USA), or 1(312) 455-8498 (outside USA)
E: proteintech@ptglab.com
W: ptglab.com

This product is exclusively available under Proteintech Group brand and is not available to purchase from any other manufacturer.

Selected Validation Data



Sandwich ELISA standard curve of MP00133-3, COL15A1 Recombinant Matched Antibody Pair, PBS Only. Capture antibody: 83031-1-PBS. Detection antibody: 83031-5-PBS. Standard: Ag34644. Range: 1.25-20 ng/mL.