

# SALL4 Recombinant antibody, PBS Only (Detector)

Catalog Number: 83039-1-PBS

## Basic Information

<b>Catalog Number:</b> 83039-1-PBS	<b>GenBank Accession Number:</b> BC111714	<b>Purification Method:</b> Protein A purification
<b>Size:</b> 100ug , Concentration: 1mg/ml by Nanodrop;	<b>GeneID (NCBI):</b> 57167	<b>CloneNo.:</b> 23028487
<b>Source:</b> Rabbit	<b>UNIPROT ID:</b> Q9UJQ4	
<b>Isotype:</b> IgG	<b>Full Name:</b> sal-like 4 (Drosophila)	
<b>Immunogen Catalog Number:</b> AG16076	<b>Calculated MW:</b> 1053 aa, 112 kDa	

## Applications

**Tested Applications:**  
Sandwich ELISA, Indirect ELISA

**Species Specificity:**  
human

## Product Information

83039-1-PBS targets SALL4 as part of a matched antibody pair:

MP00137-1: 83039-2-PBS capture and 83039-1-PBS detection (validated in Sandwich ELISA)

Unconjugated rabbit recombinant monoclonal antibody in PBS only (BSA and azide free) storage buffer at a concentration of 1 mg/mL, ready for conjugation. Created using Proteintech's proprietary in-house recombinant technology. Recombinant production enables unrivalled batch-to-batch consistency, easy scale-up, and future security of supply.

This conjugation ready format makes antibodies ideal for use in many applications including: ELISAs, multiplex assays requiring matched pairs, mass cytometry, and multiplex imaging applications. Antibody use should be optimized by the end user for each application and assay.

## Storage

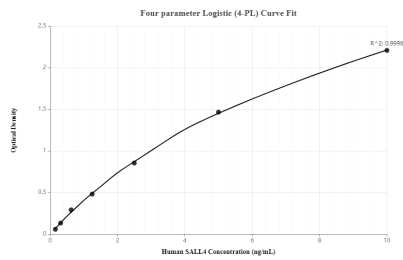
**Storage:**  
Store at -80°C.

**Storage Buffer:**  
100% PBS pH 7.3

For technical support and original validation data for this product please contact:  
T: 1 (888) 4PTGLAB (1-888-478-4522) (toll free in USA), or 1(312) 455-8498 (outside USA)  
E: [proteintech@ptglab.com](mailto:proteintech@ptglab.com)  
W: [ptglab.com](http://ptglab.com)

This product is exclusively available under Proteintech Group brand and is not available to purchase from any other manufacturer.

# Selected Validation Data



Sandwich ELISA standard curve ofMP00137-1, SALL4 Recombinant Matched Antibody Pair, PBS Only. Capture antibody: 83039-2-PBS. Detection antibody: 83039-1-PBS. Standard: Ag16076. Range: 0.156-10 ng/mL