

For Research Use Only

SALL4 Recombinant antibody, PBS Only (Detector)

Catalog Number: 83039-3-PBS



Basic Information

Catalog Number: 83039-3-PBS	GenBank Accession Number: BC111714	Purification Method: Protein A purification
Size: 100ug , Concentration: 1mg/ml by Nanodrop;	GeneID (NCBI): 57167	CloneNo.: 230284D8
Source: Rabbit	UNIPROT ID: Q9UJQ4	
Isotype: IgG	Full Name: sal-like 4 (Drosophila)	
Immunogen Catalog Number: AG16076	Calculated MW: 1053 aa, 112 kDa	

Applications

Tested Applications:
Sandwich ELISA, Indirect ELISA, Sample test

Species Specificity:
human

Product Information

83039-3-PBS targets SALL4 as part of a matched antibody pair:

MP00137-2: 83039-2-PBS capture and 83039-3-PBS detection (validated in Sandwich ELISA)

Unconjugated rabbit recombinant monoclonal antibody in PBS only (BSA and azide free) storage buffer at a concentration of 1 mg/mL, ready for conjugation. Created using Proteintech's proprietary in-house recombinant technology. Recombinant production enables unrivalled batch-to-batch consistency, easy scale-up, and future security of supply.

This conjugation ready format makes antibodies ideal for use in many applications including: ELISAs, multiplex assays requiring matched pairs, mass cytometry, and multiplex imaging applications. Antibody use should be optimized by the end user for each application and assay.

Storage

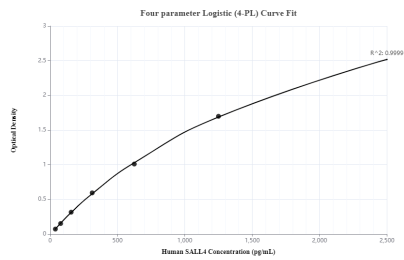
Storage:
Store at -80°C.

Storage Buffer:
100% PBS pH 7.3

For technical support and original validation data for this product please contact:
T: 1 (888) 4PTGLAB (1-888-478-4522) (toll free in USA), or 1(312) 455-8498 (outside USA)
E: proteintech@ptglab.com
W: ptglab.com

This product is exclusively available under Proteintech Group brand and is not available to purchase from any other manufacturer.

Selected Validation Data



Sandwich ELISA standard curve of MP00137-2, SALL4 Recombinant Matched Antibody Pair, PBS Only. Capture antibody: 83039-2-PBS. Detection antibody: 83039-3-PBS. Standard: Ag16076. Range: 39-2500 pg/mL