

For Research Use Only

# MTA3 Recombinant antibody, PBS Only (Capture)

Catalog Number: 83042-3-PBS

Featured Product



## Basic Information

|                                                           |                                                               |                                                       |
|-----------------------------------------------------------|---------------------------------------------------------------|-------------------------------------------------------|
| <b>Catalog Number:</b><br>83042-3-PBS                     | <b>GenBank Accession Number:</b><br>BC053631                  | <b>Purification Method:</b><br>Protein A purification |
| <b>Size:</b><br>100ug, Concentration: 1mg/ml by Nanodrop; | <b>GeneID (NCBI):</b><br>57504                                | <b>CloneNo.:</b><br>230350D12                         |
| <b>Source:</b><br>Rabbit                                  | <b>UNIPROT ID:</b><br>Q9BTC8                                  |                                                       |
| <b>Isotype:</b><br>IgG                                    | <b>Full Name:</b><br>metastasis associated 1 family, member 3 |                                                       |
| <b>Immunogen Catalog Number:</b><br>AG6400                | <b>Calculated MW:</b><br>68 kDa                               |                                                       |
|                                                           | <b>Observed MW:</b><br>62 kDa, 68 kDa                         |                                                       |

## Applications

**Tested Applications:**  
WB, IF/ICC, FC (Intra), Cytometric bead array, Sandwich ELISA, Indirect ELISA, Sample test

**Species Specificity:**  
human, mouse

## Product Information

83042-3-PBS targets MTA3 as part of a matched antibody pair:

MP00017-2: 83042-3-PBS capture and 83042-1-PBS detection (validated in Cytometric bead array, Sandwich ELISA)

MP00017-3: 83042-3-PBS capture and 83042-5-PBS detection (validated in Cytometric bead array)

Unconjugated rabbit recombinant monoclonal antibody in PBS only (BSA and azide free) storage buffer at a concentration of 1 mg/mL, ready for conjugation. Created using Proteintech's proprietary in-house recombinant technology. Recombinant production enables unrivalled batch-to-batch consistency, easy scale-up, and future security of supply.

This conjugation ready format makes antibodies ideal for use in many applications including: ELISAs, multiplex assays requiring matched pairs, mass cytometry, and multiplex imaging applications. Antibody use should be optimized by the end user for each application and assay.

## Background Information

The metastasis-associated (MTA) family contains three members, MTA1, MTA2 and MTA3 (PMID:12167865). Metastasis-associated protein 3 (MTA3) is a cell-type specific component of the Mi-2-NURD transcriptional co-repressor complex. It has a role in maintenance of the normal epithelial architecture through the repression of SNAIL1 transcription in a histone deacetylase-dependent manner, and thus the regulation of E-cadherin levels.

## Storage

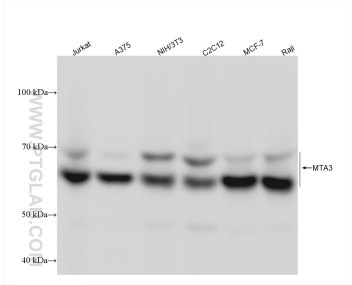
**Storage:**  
Store at -80°C.

**Storage Buffer:**  
100% PBS pH 7.3

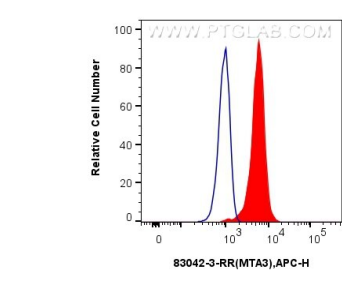
For technical support and original validation data for this product please contact:  
T: 1 (888) 4PTGLAB (1-888-478-4522) (toll free in USA), or 1(312) 455-8498 (outside USA)  
E: [proteintech@ptglab.com](mailto:proteintech@ptglab.com)  
W: [ptglab.com](http://ptglab.com)

This product is exclusively available under Proteintech Group brand and is not available to purchase from any other manufacturer.

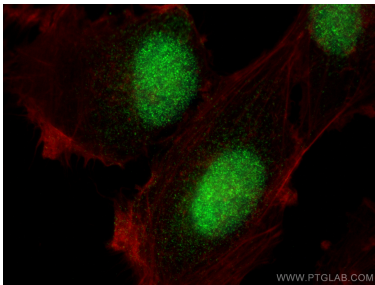
Selected Validation Data



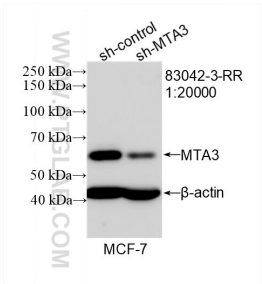
Various lysates were subjected to SDS PAGE followed by western blot with 83042-3-RR (MTA3 antibody) at dilution of 1:20000 incubated at room temperature for 1.5 hours. This data was developed using the same antibody clone with 83042-3-PBS in a different storage buffer formulation.



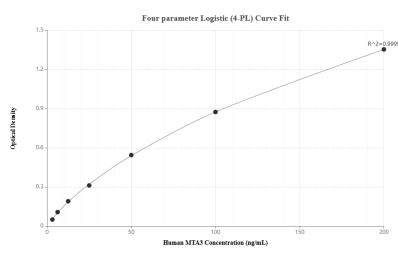
1x10<sup>6</sup> U-251 cells were intracellularly stained with 0.25 ug MTA3 Recombinant antibody (83042-3-RR, Clone:230350D12) and APC-Conjugated AffiniPure Goat Anti-Rabbit IgG(H+L)(red), or 0.25 ug Rabbit IgG control Rabbit PolyAb (30000-O-AP) (blue). Cells were fixed and permeabilized with True-Nuclear Transcription Factor Buffer Set. This data was developed using the same antibody clone with 83042-3-PBS in a different storage buffer formulation.



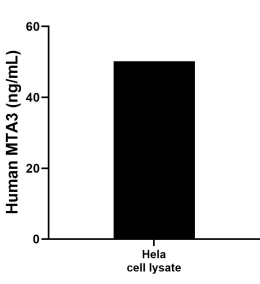
Immunofluorescent analysis of (4% PFA) fixed U-251 cells using MTA3 antibody (83042-3-RR, Clone: 230350D12 ) at dilution of 1:200 and Multi-rAb CoraLite® Plus 488-Goat Anti-Rabbit Recombinant Secondary Antibody (H+L) (RGAR002), CL594-Phalloidin (red). This data was developed using the same antibody clone with 83042-3-PBS in a different storage buffer formulation.



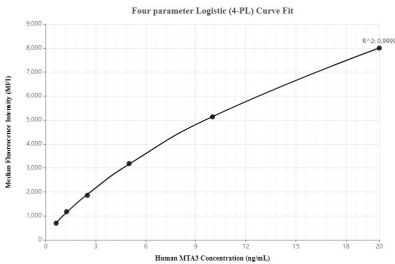
WB result of MTA3 antibody (83042-3-RR; 1:20000; incubated at room temperature for 1.5 hours) with sh-Control and sh-MTA3 transfected MCF-7 cells. This data was developed using the same antibody clone with 83042-3-PBS in a different storage buffer formulation.



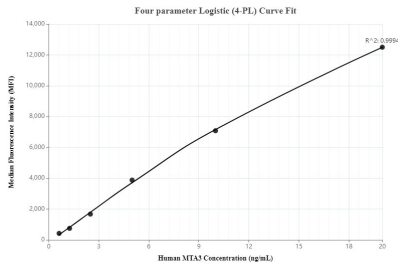
Sandwich ELISA standard curve of MP00017-2, Human MTA3 Recombinant Matched Antibody Pair - PBS only. 83042-3-PBS was coated to a plate as the capture antibody and incubated with serial dilutions of standard Ag6400. 83042-1-PBS was HRP conjugated as the detection antibody. Range: 3.13-200 ng/mL



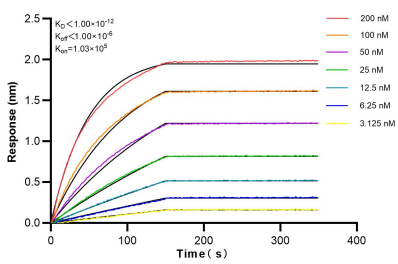
HeLa cell lysate was measured. The human MTA3 concentration of detected samples was determined to be 50.22 ng/mL (based on a 3.2 mg/mL extract load).



Cytometric bead array standard curve of MP00017-2, MTA3 Recombinant Matched Antibody Pair, PBS Only. Capture antibody: 83042-3-PBS. Detection antibody: 83042-1-PBS. Standard: Ag6400. Range: 0.625-20 ng/mL.



Cytometric bead array standard curve of MP00017-3, MTA3 Recombinant Matched Antibody Pair, PBS Only. Capture antibody: 83042-3-PBS. Detection antibody: 83042-5-PBS. Standard: Ag6400. Range: 0.625-20 ng/mL.



Bi-layer interferometry (BLI) kinetic assays of 83042-3-RR against Human MTA3 were performed. The affinity constant is below 1 pM.